

For Research Use Only

LPP Recombinant antibody

Catalog Number: 86117-3-RR



Basic Information

Catalog Number:

86117-3-RR

Concentration:

1000 μ g/ml

Source:

Rabbit

Isotype:

IgG

Immunogen Catalog Number:

AG19205

GenBank Accession Number:

BC130584

GeneID (NCBI):

4026

UNIPROT ID:

Q93052

Full Name:

LIM domain containing preferred translocation partner in lipoma

Calculated MW:

612 aa, 66 kDa

Observed MW:

70-75 kDa

Purification Method:

Protein A purification

CloneNo.:

250773C9

Recommended Dilutions:

WB: 1:5000-1:50000

Applications

Tested Applications:

WB, ELISA

Species Specificity:

human, mouse, rat

Positive Controls:

WB : HeLa cells, mouse colon tissue, HEK-293 cells, MCF-7 cells, rat colon tissue

Background Information

LPP is a member of a subfamily of LIM domain proteins. Its characteristic is that the N-terminal region is rich in proline, and it has three C-terminal LIM domains. LPP localizes to the cell periphery in focal adhesions and may be involved in cell-cell adhesion and cell motility (PMID: 10637295). LPP is located at the junction of certain disease-related chromosomal translocations, which result in the expression of chimeric proteins that may promote tumor growth (PMID: 12581855).

Storage

Storage:

Store at -20°C. Stable for one year after shipment.

Storage Buffer:

PBS with 0.02% sodium azide and 50% glycerol, pH7.3

Aliquoting is unnecessary for -20°C storage

For technical support and original validation data for this product please contact:

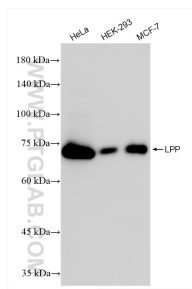
T: 4006900926

E: Proteintech-CN@ptglab.com

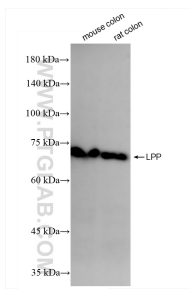
W: ptgcn.com

This product is exclusively available under Proteintech Group brand and is not available to purchase from any other manufacturer.

Selected Validation Data



Various lysates were subjected to SDS PAGE followed by western blot with 86117-3-RR (LPP antibody) at dilution of 1:10000 incubated at room temperature for 1.5 hours.



Various lysates were subjected to SDS PAGE followed by western blot with 86117-3-RR (LPP antibody) at dilution of 1:10000 incubated at room temperature for 1.5 hours.