

For Research Use Only

CPE Recombinant antibody, PBS Only (Capture)

Catalog Number: 86111-2-PBS



Basic Information

Catalog Number:

86111-2-PBS

Concentration:

1 mg/ml

Source:

Rabbit

Isotype:

IgG

Immunogen Catalog Number:

EG2989

GenBank Accession Number:

NM_001873.4

GeneID (NCBI):

1363

UNIPROT ID:

P16870-1

Full Name:

carboxypeptidase E

Calculated MW:

53 kDa

Purification Method:

Protein A purification

CloneNo.:

250680C9

Applications

Tested Applications:

Sandwich ELISA, Indirect ELISA, Sample test

Species Specificity:

human

Background Information

Storage

Storage:

Store at -80°C.

The product is shipped with ice packs. Upon receipt, store it immediately at -80°C

Storage Buffer:

PBS only, pH7.3

For technical support and original validation data for this product please contact:

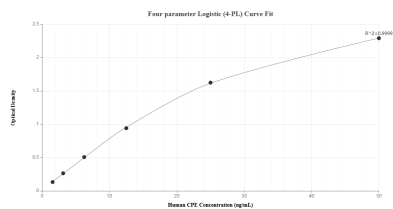
T: 4006900926

E: Proteintech-CN@ptglab.com

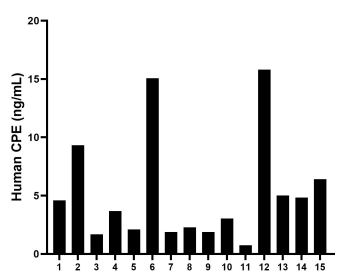
W: ptgcn.com

This product is exclusively available under Proteintech Group brand and is not available to purchase from any other manufacturer.

Selected Validation Data



Sandwich ELISA standard curve of MP02472-1, Human CPE Recombinant Matched Antibody Pair - PBS only. 86111-2-PBS was coated to a plate as the capture antibody and incubated with serial dilutions of standard Eg2989. 86111-1-PBS was HRP conjugated as the detection antibody. Range: 1.56-50 ng/mL



Serum of fifteen individual healthy human donors was measured. The human CPE concentration of detected samples was determined to be 5.22 ng/mL with a range of 0.76 - 15.81 ng/mL.