

For Research Use Only

CPE Recombinant antibody

Catalog Number: 86111-1-RR



Basic Information

Catalog Number:

86111-1-RR

Concentration:

1000 μ g/ml

Source:

Rabbit

Isotype:

IgG

Immunogen Catalog Number:

EG2989

GenBank Accession Number:

NM_001873.4

GeneID (NCBI):

1363

UNIPROT ID:

P16870-1

Full Name:

carboxypeptidase E

Calculated MW:

53 kDa

Observed MW:

50-55 kDa

Purification Method:

Protein A purification

CloneNo.:

250680F12

Recommended Dilutions:

WB: 1:2000-1:10000

Applications

Tested Applications:

WB, ELISA

Species Specificity:

human, mouse, rat

Positive Controls:

WB : MCF-7 cells, PC-12 cells, mouse brain tissue, rat brain tissue

Background Information

CPE (Carboxypeptidase E) is also named as CPH. It belongs to the peptidase M14 family and is involved in the biosynthesis of peptide hormones and neurotransmitters, including insulin. The deduced 476-amino acid human protein contains an N-terminal signal peptide, followed by a 'pro' sequence, a polyarginine stretch, and 2 potential N-glycosylation sites.

Storage

Storage:

Store at -20°C. Stable for one year after shipment.

Storage Buffer:

PBS with 0.02% sodium azide and 50% glycerol, pH7.3

Aliquoting is unnecessary for -20°C storage

For technical support and original validation data for this product please contact:

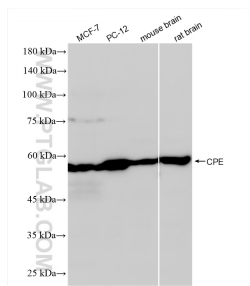
T: 4006900926

E: Proteintech-CN@ptglab.com

W: ptgcn.com

This product is exclusively available under Proteintech Group brand and is not available to purchase from any other manufacturer.

Selected Validation Data



Various lysates were subjected to SDS PAGE followed by western blot with 86111-1-RR (CPE antibody) at dilution of 1:5000 incubated at room temperature for 1.5 hours.