

For Research Use Only

# Enpep Recombinant antibody

Catalog Number: 86110-1-RR



## Basic Information

Catalog Number:

86110-1-RR

Concentration:

1000 µg/ml

Source:

Rabbit

Isotype:

IgG

Immunogen Catalog Number:

EG4233

GenBank Accession Number:

NM\_007934.3

GeneID (NCBI):

13809

UNIPROT ID:

P16406

Full Name:

glutamyl aminopeptidase

Calculated MW:

108 kDa

Observed MW:

140 kDa

Purification Method:

Protein A purification

CloneNo.:

250659A5

Recommended Dilutions:

WB: 1:2000-1:10000

## Applications

Tested Applications:

WB, ELISA

Species Specificity:

human, mouse

Positive Controls:

WB : mouse kidney tissue, human kidney tissue

## Background Information

The gene ENPEP encodes glutamyl aminopeptidase, which can cut N - terminal aspartic acid from angiotensin II, and is related to tumorigenesis and immune microenvironment. ENPEP is a potential biomarker to classify patients' response to ICIs treatment (PMID: 34862755). This protein has multiple glycosylation sites: 4 N-linked glycans (4 sites), 1 O-linked glycan (1 site).

## Storage

Storage:

Store at -20°C. Stable for one year after shipment.

Storage Buffer:

PBS with 0.02% sodium azide and 50% glycerol, pH7.3

Aliquoting is unnecessary for -20°C storage

For technical support and original validation data for this product please contact:

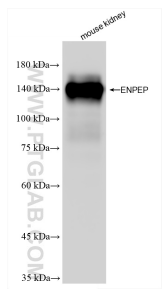
T: 4006900926

E: Proteintech-CN@ptglab.com

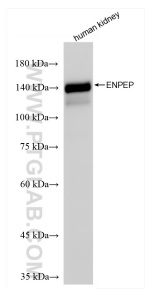
W: ptgcn.com

This product is exclusively available under Proteintech Group brand and is not available to purchase from any other manufacturer.

## Selected Validation Data



Various lysates were subjected to SDS PAGE followed by western blot with 86110-1-RR (Enpep antibody) at dilution of 1:5000 incubated at room temperature for 1.5 hours.



Various lysates were subjected to SDS PAGE followed by western blot with 86110-1-RR (Enpep antibody) at dilution of 1:5000 incubated at room temperature for 1.5 hours.