

For Research Use Only

Mouse Enpep Recombinant antibody, PBS Only

Catalog Number: 86110-1-PBS



Basic Information

Catalog Number:

86110-1-PBS

Concentration:

1 mg/ml

Source:

Rabbit

Isotype:

IgG

Immunogen Catalog Number:

EG4233

GenBank Accession Number:

NM_007934.3

GeneID (NCBI):

13809

UNIPROT ID:

P16406

Full Name:

glutamyl aminopeptidase

Calculated MW:

108 kDa

Observed MW:

140 kDa

Purification Method:

Protein A purification

CloneNo.:

250659A5

Applications

Tested Applications:

WB, Indirect ELISA

Species Specificity:

human, mouse

Background Information

The gene ENPEP encodes glutamyl aminopeptidase, which can cut N - terminal aspartic acid from angiotensin II, and is related to tumorigenesis and immune microenvironment. ENPEP is a potential biomarker to classify patients' response to ICIs treatment (PMID: 34862755). This protein has multiple glycosylation sites: 4 N-linked glycans (4 sites), 1 O-linked glycan (1 site).

Storage

Storage:

Store at -80°C.

The product is shipped with ice packs. Upon receipt, store it immediately at -80°C

Storage Buffer:

PBS only, pH7.3

For technical support and original validation data for this product please contact:

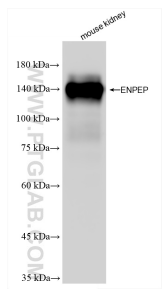
T: 4006900926

E: Proteintech-CN@ptglab.com

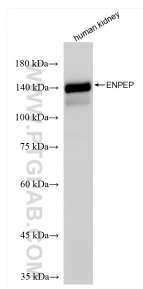
W: ptgcn.com

This product is exclusively available under Proteintech Group brand and is not available to purchase from any other manufacturer.

Selected Validation Data



Various lysates were subjected to SDS PAGE followed by western blot with 86110-1-RR (Enpep antibody) at dilution of 1:5000 incubated at room temperature for 1.5 hours. This data was developed using the same antibody clone with 86110-1-PBS in a different storage buffer formulation.



Various lysates were subjected to SDS PAGE followed by western blot with 86110-1-RR (Enpep antibody) at dilution of 1:5000 incubated at room temperature for 1.5 hours. This data was developed using the same antibody clone with 86110-1-PBS in a different storage buffer formulation.