

For Research Use Only

KLK6 Recombinant antibody, PBS Only (Capture)

Catalog Number: 86108-2-PBS



Basic Information

Catalog Number: 86108-2-PBS	GenBank Accession Number: NM_001012964.2	Purification Method: Protein A purification
Concentration: 1 mg/ml	GeneID (NCBI): 5653	CloneNo.: 250322F11
Source: Rabbit	UNIPROT ID: Q92876-1	
Isotype: IgG	Full Name: kallikrein-related peptidase 6	
Immunogen Catalog Number: EG2826	Calculated MW: 27 kDa	

Applications

Tested Applications:
Sandwich ELISA, Indirect ELISA, Sample test

Species Specificity:
human

Background Information

Storage

Storage:
Store at -80°C.
The product is shipped with ice packs. Upon receipt, store it immediately at -80°C

Storage Buffer:
PBS only, pH7.3

For technical support and original validation data for this product please contact:

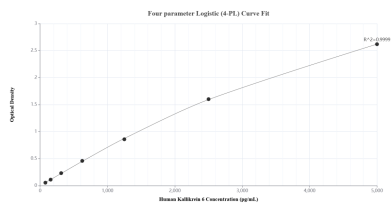
T: 4006900926

E: Proteintech-CN@ptglab.com

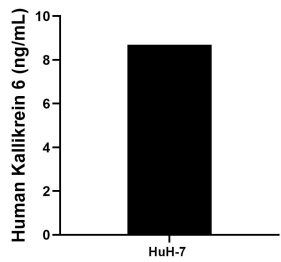
W: ptgcn.com

This product is exclusively available under Proteintech Group brand and is not available to purchase from any other manufacturer.

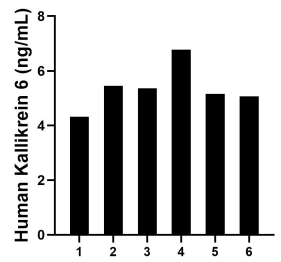
Selected Validation Data



Sandwich ELISA standard curve of MP02265-1, Human Kallikrein 6 Recombinant Matched Antibody Pair - PBS only. 86108-2-PBS was coated to a plate as the capture antibody and incubated with serial dilutions of standard Eg2826. 86108-1-PBS was HRP conjugated as the detection antibody. Range: 78.1-5000 pg/mL



The mean Kallikrein 6 concentration was determined to be 8.7 ng/mL in HuH-7 cell extract based on a 1.4 mg/mL extract load.



Serum of six individual healthy human donors was measured. The Kallikrein 6 concentration of detected samples was determined to be 5.4 ng/mL with a range of 4.3-6.8 ng/mL.