

For Research Use Only

SHH Recombinant antibody

Catalog Number: 86106-1-RR



Basic Information

Catalog Number:

86106-1-RR

Concentration:

1000 µg/ml

Source:

Rabbit

Isotype:

IgG

Immunogen Catalog Number:

EG4010

GenBank Accession Number:

NM_000193

GeneID (NCBI):

6469

UNIPROT ID:

Q15465

Full Name:

sonic hedgehog homolog (Drosophila)

Calculated MW:

50 kDa

Observed MW:

50-60 kDa

Purification Method:

Protein A purification

CloneNo.:

250549A9

Recommended Dilutions:

WB: 1:5000-1:50000

Applications

Tested Applications:

WB, ELISA

Species Specificity:

human, mouse, rat

Positive Controls:

WB : mouse liver tissue, rat liver tissue

Background Information

SHH, also named as HHG-1, belongs to the hedgehog family. SHH binds to the patched (PTC) receptor, which functions in association with smoothened (SMO), to activate the transcription of target genes. In the absence of SHH, PTC represses the constitutive signaling activity of SMO. It regulates another target, the gli oncogene. The Shh protein is synthesized as a 45-kDa precursor that undergoes an autocatalytic processing event that produces a 19-kDa N-terminal product, responsible for all signaling activities, and a 25-kDa C-terminal fragment (PMID:10753901, PMID: 16282375). SHH can be detected precursor protein as 48-51-kDa polypeptides (PMID: 15292211).

Storage

Storage:

Store at -20°C. Stable for one year after shipment.

Storage Buffer:

PBS with 0.02% sodium azide and 50% glycerol, pH7.3

Aliquoting is unnecessary for -20°C storage

For technical support and original validation data for this product please contact:

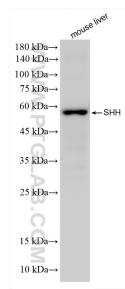
T: 4006900926

E: Proteintech-CN@ptglab.com

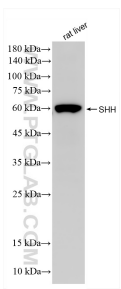
W: ptgcn.com

This product is exclusively available under Proteintech Group brand and is not available to purchase from any other manufacturer.

Selected Validation Data



mouse liver tissue were subjected to SDS PAGE followed by western blot with 86106-1-RR (SHH antibody) at dilution of 1:10000 incubated at room temperature for 1.5 hours.



rat liver tissue were subjected to SDS PAGE followed by western blot with 86106-1-RR (SHH antibody) at dilution of 1:10000 incubated at room temperature for 1.5 hours.