

For Research Use Only

ERO1LB Recombinant antibody

Catalog Number: 86104-1-RR



Basic Information

Catalog Number: 86104-1-RR	GenBank Accession Number: NM_019891.3	Purification Method: Protein A purification
Concentration: 1000 µg/ml	GeneID (NCBI): 56605	CloneNo.: 250655G4
Source: Rabbit	UNIPROT ID: Q86YB8	Recommended Dilutions: WB: 1:6000-1:10000
Isotype: IgG	Full Name: ERO1-like beta (S. cerevisiae)	
Immunogen Catalog Number: EG2622	Calculated MW: 56 kDa	
	Observed MW: 56 kDa	

Applications

Tested Applications: WB, ELISA	Positive Controls: WB : PC-3 cells, IM-9 cells, HeLa cells
Species Specificity: human	

Background Information

Endoplasmic reticulum oxidoreductases (Eros) are essential for the formation of disulfide bonds. Mammals express two related Ero proteins, Ero1L alpha and Ero1L beta. The two homologous proteins can form homodimers and mixed heterodimers. ERO1-L α and - β are highly expressed in organs with a high demand for secretion, consistent with their roles in oxidative folding of ER proteins.

Storage

Storage:
Store at -20°C. Stable for one year after shipment.
Storage Buffer:
PBS with 0.02% sodium azide and 50% glycerol, pH7.3
Aliquoting is unnecessary for -20°C storage

For technical support and original validation data for this product please contact:

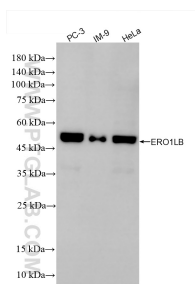
T: 4006900926

E: Proteintech-CN@ptglab.com

W: ptgcn.com

This product is exclusively available under Proteintech Group brand and is not available to purchase from any other manufacturer.

Selected Validation Data



Various lysates were subjected to SDS PAGE followed by western blot with 86104-1-RR (ERO1LB antibody) at dilution of 1:10000 incubated at room temperature for 1.5 hours.