

For Research Use Only

# MCM10 Recombinant antibody

Catalog Number: 86103-1-RR



## Basic Information

Catalog Number:

86103-1-RR

Concentration:

1000 µg/ml

Source:

Rabbit

Isotype:

IgG

Immunogen Catalog Number:

AG2899

GenBank Accession Number:

BC009108

GeneID (NCBI):

55388

UNIPROT ID:

Q7L590

Full Name:

minichromosome maintenance  
complex component 10

Calculated MW:

874 aa, 97 kDa

Observed MW:

97-105 kDa

Purification Method:

Protein A purification

CloneNo.:

250423A12

Recommended Dilutions:

WB: 1:5000-1:50000

## Applications

Tested Applications:

WB, ELISA

Species Specificity:

human

Positive Controls:

WB : HeLa cells, HEK-293T cells, Jurkat cells, Ramos cells

## Background Information

MCM10, also named as HsMCM10, belongs to the MCM10 family. It acts as a replication initiation factor that brings together the MCM2-7 helicase and the DNA polymerase alpha/primase complex in order to initiate DNA replication. Additionally, it plays a role in preventing DNA damage during replication and is essential for the integrity of the RECQ4-MCM replicative helicase complex. It mediates RECQ4 association with MCM2-7 helicase complex during DNA replication.

## Storage

Storage:

Store at -20°C. Stable for one year after shipment.

Storage Buffer:

PBS with 0.02% sodium azide and 50% glycerol, pH7.3

Aliquoting is unnecessary for -20°C storage

For technical support and original validation data for this product please contact:

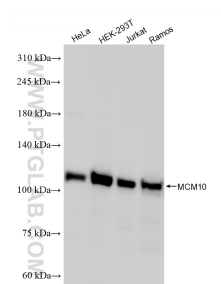
T: 4006900926

E: Proteintech-CN@ptglab.com

W: ptgcn.com

This product is exclusively available under Proteintech Group brand and is not available to purchase from any other manufacturer.

## Selected Validation Data



Various lysates were subjected to SDS PAGE followed by western blot with 86103-1-RR (MCM10 antibody) at dilution of 1:30000 incubated at room temperature for 1.5 hours.