

For Research Use Only

# MCM10 Recombinant antibody, PBS Only

Catalog Number: 86103-1-PBS



## Basic Information

Catalog Number:

86103-1-PBS

Concentration:

1 mg/ml

Source:

Rabbit

Isotype:

IgG

Immunogen Catalog Number:

AG2899

GenBank Accession Number:

BC009108

GeneID (NCBI):

55388

UNIPROT ID:

Q7L590

Full Name:

minichromosome maintenance  
complex component 10

Calculated MW:

874 aa, 97 kDa

Observed MW:

97-105 kDa

Purification Method:

Protein A purification

CloneNo.:

250423A12

## Applications

Tested Applications:

WB, Indirect ELISA

Species Specificity:

human

## Background Information

MCM10, also named as HsMCM10, belongs to the MCM10 family. It acts as a replication initiation factor that brings together the MCM2-7 helicase and the DNA polymerase alpha/primase complex in order to initiate DNA replication. Additionally, it plays a role in preventing DNA damage during replication and is essential for the integrity of the RECQ4-MCM replicative helicase complex. It mediates RECQ4 association with MCM2-7 helicase complex during DNA replication.

## Storage

Storage:

Store at -80°C.

**The product is shipped with ice packs. Upon receipt, store it immediately at -80°C**

Storage Buffer:

PBS only, pH7.3

For technical support and original validation data for this product please contact:

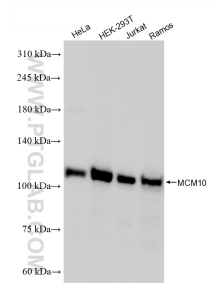
T: 4006900926

E: [Proteintech-CN@ptglab.com](mailto:Proteintech-CN@ptglab.com)

W: [ptgcn.com](http://ptgcn.com)

**This product is exclusively available under Proteintech Group brand and is not available to purchase from any other manufacturer.**

## Selected Validation Data



Various lysates were subjected to SDS PAGE followed by western blot with 86103-1-RR (MCM10 antibody) at dilution of 1:30000 incubated at room temperature for 1.5 hours. This data was developed using the same antibody clone with 86103-1-PBS in a different storage buffer formulation.