

For Research Use Only

MAG Recombinant antibody, PBS Only (Capture)

Catalog Number: 86097-2-PBS



Basic Information

Catalog Number:

86097-2-PBS

Concentration:

1 mg/ml

Source:

Rabbit

Isotype:

IgG

Immunogen Catalog Number:

EG2975

GenBank Accession Number:

NM_002361.3

GeneID (NCBI):

4099

UNIPROT ID:

P20916-1

Full Name:

myelin associated glycoprotein

Calculated MW:

69 kDa

Purification Method:

Protein A purification

CloneNo.:

250555H1

Applications

Tested Applications:

Sandwich ELISA, Indirect ELISA, Sample test

Species Specificity:

human

Background Information

Storage

Storage:

Store at -80°C.

The product is shipped with ice packs. Upon receipt, store it immediately at -80°C

Storage Buffer:

PBS only, pH7.3

For technical support and original validation data for this product please contact:

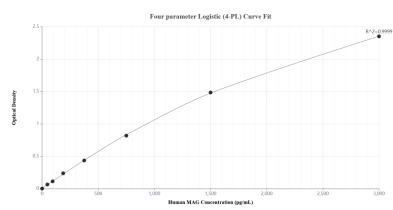
T: 4006900926

E: Proteintech-CN@ptglab.com

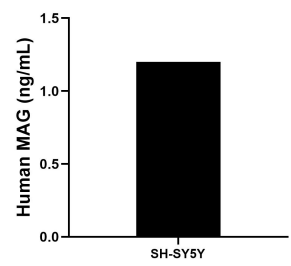
W: ptgcn.com

This product is exclusively available under Proteintech Group brand and is not available to purchase from any other manufacturer.

Selected Validation Data



Sandwich ELISA standard curve of MP02467-1, Human MAG Recombinant Matched Antibody Pair - PBS only. 86097-2-PBS was coated to a plate as the capture antibody and incubated with serial dilutions of standard Eg2975. 86097-1-PBS was HRP conjugated as the detection antibody. Range: 46.9-3000 pg/mL.



The mean MAG concentration was determined to be 1.2 ng/mL in SH-SY5Y cell extract based on a 3.2 mg/mL extract load.