

For Research Use Only

ASCC2 Recombinant antibody

Catalog Number: 86086-1-RR



Basic Information

Catalog Number: 86086-1-RR	GenBank Accession Number: BC025368	Purification Method: Protein A purification
Concentration: 1000 µg/ml	GeneID (NCBI): 84164	CloneNo.: 250566D5
Source: Rabbit	UNIPROT ID: Q9H1I8	Recommended Dilutions: WB: 1:2000-1:10000 IHC: 1:200-1:800 IF/ICC: 1:150-1:600
Isotype: IgG	Full Name: activating signal cointegrator 1 complex subunit 2	
Immunogen Catalog Number: AG2100	Calculated MW: 757 aa, 86 kDa	
	Observed MW: 90-100 kDa	

Applications

Tested Applications: WB, IHC, IF/ICC, ELISA	Positive Controls:
Species Specificity: human, mouse, rat	WB : HeLa cells, mouse brain tissue, HepG2 cells, K-562 cells, MCF-7 cells, HEK-293T cells, rat brain tissue
Note-IHC: suggested antigen retrieval with TE buffer pH 9.0; (*) Alternatively, antigen retrieval may be performed with citrate buffer pH 6.0	IHC : human colon cancer tissue,
	IF/ICC : HepG2 cells,

Background Information

ASCC2, also known as ASC1p100, is a subunit of the activating signal cointegrator 1 complex. ASCC2 plays a role in DNA damage repair as a component of the ASCC complex, recruiting ASCC3 and ALKBH3 to sites of DNA damage by binding to polyubiquitinated proteins that have 'Lys-63'-linked polyubiquitin chains. Additionally, it is part of the ASC-1 complex that enhances NF-kappa-B, SRF, and AP1 transactivation(PMID: 29144457, 12077347).

Storage

Storage:
Store at -20°C. Stable for one year after shipment.
Storage Buffer:
PBS with 0.02% sodium azide and 50% glycerol, pH7.3
Aliquoting is unnecessary for -20°C storage

For technical support and original validation data for this product please contact:

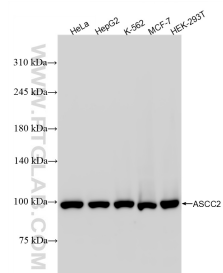
T: 4006900926

E: Proteintech-CN@ptglab.com

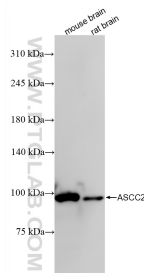
W: ptgcn.com

This product is exclusively available under Proteintech Group brand and is not available to purchase from any other manufacturer.

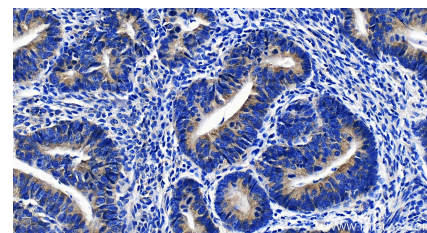
Selected Validation Data



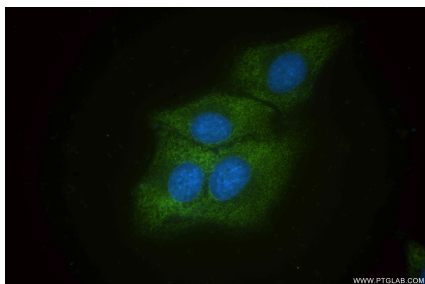
Various lysates were subjected to SDS PAGE followed by western blot with 86086-1-RR (ASCC2 antibody) at dilution of 1:5000 incubated at room temperature for 1.5 hours.



Various lysates were subjected to SDS PAGE followed by western blot with 86086-1-RR (ASCC2 antibody) at dilution of 1:5000 incubated at room temperature for 1.5 hours.



Immunohistochemical analysis of paraffin-embedded human colon cancer tissue slide using 86086-1-RR (ASCC2 antibody) at dilution of 1:400 (under 20x lens). Heat mediated antigen retrieval with Tris-EDTA buffer (pH 9.0).



Immunofluorescent analysis of (-20°C Ethanol) fixed HepG2 cells using ASCC2 antibody (86086-1-RR, Clone: 250566D5) at dilution of 1:300 and CoraLite®488-Conjugated Goat Anti-Rabbit IgG(H+L) (SA00013-2).