

For Research Use Only

PLN Recombinant monoclonal antibody

Catalog Number: 86080-1-RR



Basic Information

Catalog Number:

86080-1-RR

Source:

Rabbit

Isotype:

IgG

Immunogen Catalog Number:

AG8632

GenBank Accession Number:

BC005269

GeneID (NCBI):

5350

UNIPROT ID:

P26678

Full Name:

phospholamban

Calculated MW:

52 aa, 6 kDa

Observed MW:

10 kDa, 25 kDa

Purification Method:

Protein A purification

CloneNo.:

250753E7

Recommended Dilutions:

WB: 1:5000-1:50000

Applications

Tested Applications:

WB, ELISA

Species Specificity:

human, mouse, rat

Positive Controls:

WB : mouse heart tissue, rat heart tissue, human heart tissue

Background Information

Phospholamban (PLN) is a 52-amino-acid transmembrane protein found in the sarcoplasmic reticulum (SR) of cardiac muscle cells. It has been postulated to regulate the activity of the calcium pump of cardiac sarcoplasmic reticulum. Phospholamban has a homopentamer form (25-27 kDa).

Storage

Storage:

Store at -20°C. Stable for one year after shipment.

Storage Buffer:

PBS with 0.02% sodium azide and 50% glycerol, pH7.3

Aliquoting is unnecessary for -20°C storage

For technical support and original validation data for this product please contact:

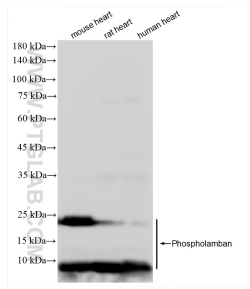
T: 4006900926

E: Proteintech-CN@ptglab.com

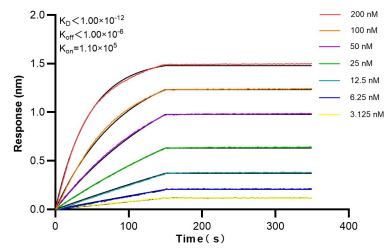
W: ptgcn.com

This product is exclusively available under Proteintech Group brand and is not available to purchase from any other manufacturer.

Selected Validation Data



Various lysates were subjected to SDS PAGE followed by western blot with 86080-1-RR (PLN antibody) at dilution of 1:10000 incubated at room temperature for 1.5 hours.



Biolayer interferometry (BLI) kinetic assays of 86080-1-RR against Human PLN were performed. The affinity constant is below 1 pM.