

For Research Use Only

# PLN Recombinant monoclonal antibody, PBS Only

Catalog Number: 86080-1-PBS



## Basic Information

<b>Catalog Number:</b> 86080-1-PBS	<b>GenBank Accession Number:</b> BC005269	<b>Purification Method:</b> Protein A purification
<b>Source:</b> Rabbit	<b>GeneID (NCBI):</b> 5350	<b>CloneNo.:</b> 250753E7
<b>Isotype:</b> IgG	<b>UNIPROT ID:</b> P26678	
<b>Immunogen Catalog Number:</b> AG8632	<b>Full Name:</b> phospholamban	
	<b>Calculated MW:</b> 52 aa, 6 kDa	
	<b>Observed MW:</b> 10 kDa, 25 kDa	

## Applications

**Tested Applications:**  
WB, Indirect ELISA

**Species Specificity:**  
human, mouse, rat

## Background Information

Phospholamban (PLN) is a 52-amino-acid transmembrane protein found in the sarcoplasmic reticulum (SR) of cardiac muscle cells. It has been postulated to regulate the activity of the calcium pump of cardiac sarcoplasmic reticulum. Phospholamban has a homopentamer form (25-27 kDa).

## Storage

**Storage:**  
Store at -80°C.  
**The product is shipped with ice packs. Upon receipt, store it immediately at -80°C**

**Storage Buffer:**  
PBS only, pH7.3

For technical support and original validation data for this product please contact:

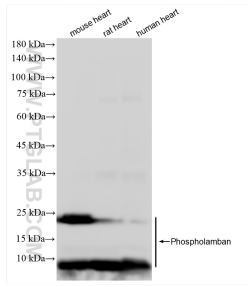
T: 4006900926

E: [Proteintech-CN@ptglab.com](mailto:Proteintech-CN@ptglab.com)

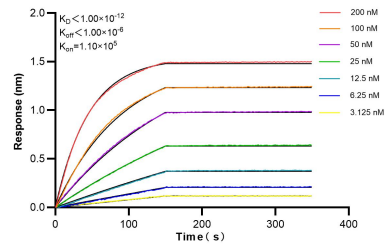
W: [ptgcn.com](http://ptgcn.com)

**This product is exclusively available under Proteintech Group brand and is not available to purchase from any other manufacturer.**

## Selected Validation Data



Various lysates were subjected to SDS PAGE followed by western blot with 86080-1-RR (PLN antibody) at dilution of 1:10000 incubated at room temperature for 1.5 hours. This data was developed using the same antibody clone with 86080-1-PBS in a different storage buffer formulation.



Biolayer interferometry (BLI) kinetic assays of 86080-1-RR against Human PLN were performed. The affinity constant is below 1 pM.