

For Research Use Only

# MAG/Siglec-4a Recombinant monoclonal antibody

Catalog Number: 86073-3-RR



## Basic Information

Catalog Number:

86073-3-RR

Source:

Rabbit

Isotype:

IgG

Immunogen Catalog Number:

EG3251

GenBank Accession Number:

NM\_017190.4

GeneID (NCBI):

29409

UNIPROT ID:

P07722-1

Full Name:

myelin-associated glycoprotein

Calculated MW:

69 kDa

Observed MW:

70-100 kDa

Purification Method:

Protein A purification

CloneNo.:

250740E3

Recommended Dilutions:

WB: 1:5000-1:50000

IHC: 1:250-1:1000

IF-P: 1:50-1:500

## Applications

Tested Applications:

WB, IHC, IF-P, ELISA

Species Specificity:

mouse, rat

**Note-IHC: suggested antigen retrieval with *TE buffer pH 9.0; (\*) Alternatively, antigen retrieval may be performed with citrate buffer pH 6.0***

Positive Controls:

**WB** : rat brain tissue, mouse brain tissue, unboiled rat brain tissue, rat cerebellum tissue, rat spinal cord tissue

**IHC** : mouse brain tissue, rat brain tissue

**IF-P** : rat brain tissue,

## Background Information

### Storage

Storage:

Store at -20°C. Stable for one year after shipment.

Storage Buffer:

PBS with 0.02% sodium azide and 50% glycerol, pH7.3

Aliquoting is unnecessary for -20°C storage

For technical support and original validation data for this product please contact:

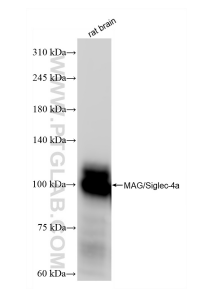
T: 4006900926

E: [Proteintech-CN@ptglab.com](mailto:Proteintech-CN@ptglab.com)

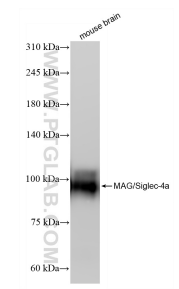
W: [ptgcn.com](http://ptgcn.com)

**This product is exclusively available under Proteintech Group brand and is not available to purchase from any other manufacturer.**

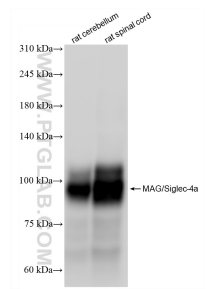
Selected Validation Data



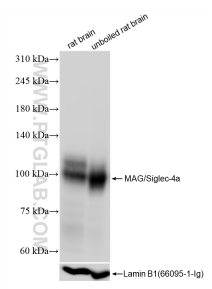
rat brain tissue were subjected to SDS PAGE followed by western blot with 86073-3-RR (MAG/Siglec-4a antibody) at dilution of 1:10000 incubated at room temperature for 1.5 hours.



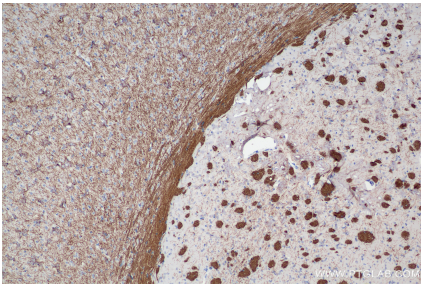
mouse brain tissue were subjected to SDS PAGE followed by western blot with 86073-3-RR (MAG/Siglec-4a antibody) at dilution of 1:10000 incubated at room temperature for 1.5 hours.



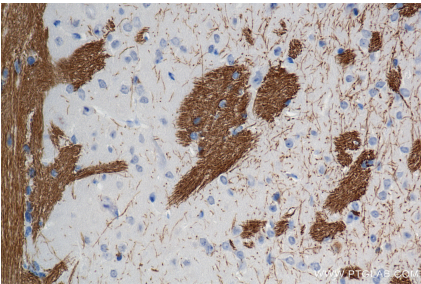
Various lysates were subjected to SDS PAGE followed by western blot with 86073-3-RR (MAG/Siglec-4a antibody) at dilution of 1:10000 incubated at room temperature for 1.5 hours.



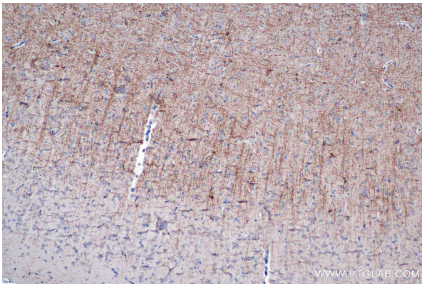
Various lysates were subjected to SDS PAGE followed by western blot with 86073-3-RR (MAG/Siglec-4a antibody) at dilution of 1:10000 incubated at room temperature for 1.5 hours.



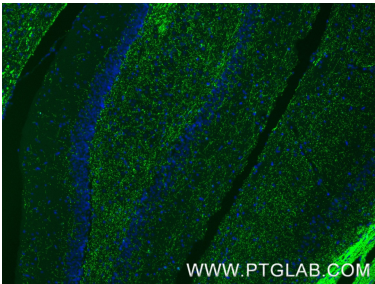
Immunohistochemical analysis of paraffin-embedded mouse brain tissue slide using 86073-3-RR (MAG/Siglec-4a antibody) at dilution of 1:500 (under 10x lens). Heat mediated antigen retrieval with Tris-EDTA buffer (pH 9.0).



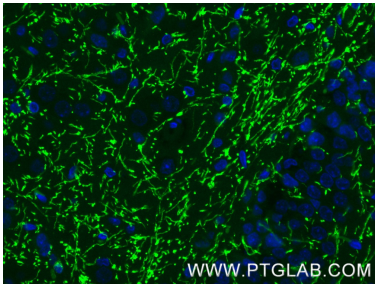
Immunohistochemical analysis of paraffin-embedded mouse brain tissue slide using 86073-3-RR (MAG/Siglec-4a antibody) at dilution of 1:500 (under 40x lens). Heat mediated antigen retrieval with Tris-EDTA buffer (pH 9.0).



Immunohistochemical analysis of paraffin-embedded rat brain tissue slide using 86073-3-RR (MAG/Siglec-4a antibody) at dilution of 1:500 (under 10x lens). Heat mediated antigen retrieval with Tris-EDTA buffer (pH 9.0).



Immunofluorescent analysis of (4% PFA) fixed paraffin-embedded rat brain tissue using MAG/Siglec-4a antibody (86073-3-RR, Clone: 250740E3 ) at dilution of 1:200 and CoraLite®488-Conjugated Goat Anti-Rabbit IgG(H+L) (SA00013-2). Heat mediated antigen retrieval with Tris-EDTA buffer (pH 9.0).



Immunofluorescent analysis of (4% PFA) fixed paraffin-embedded rat brain tissue using MAG/Siglec-4a antibody (86073-3-RR, Clone: 250740E3 ) at dilution of 1:200 and CoraLite®488-Conjugated Goat Anti-Rabbit IgG(H+L) (SA00013-2). Heat mediated antigen retrieval with Tris-EDTA buffer (pH 9.0).