

For Research Use Only

# SUCLG1 Recombinant antibody

Catalog Number: 86072-1-RR



## Basic Information

Catalog Number:

86072-1-RR

Concentration:

1000 µg/ml

Source:

Rabbit

Isotype:

IgG

Immunogen Catalog Number:

AG6481

GenBank Accession Number:

BC000504

GeneID (NCBI):

8802

UNIPROT ID:

P53597

Full Name:

succinate-CoA ligase, alpha subunit

Calculated MW:

35 kDa

Observed MW:

35 kDa

Purification Method:

Protein A purification

CloneNo.:

250424C8

Recommended Dilutions:

WB: 1:5000-1:50000

IF/ICC: 1:400-1:1600

## Applications

Tested Applications:

WB, IF/ICC, ELISA

Species Specificity:

human, mouse, rat

Positive Controls:

WB : A549 cells, mouse kidney tissue, rat kidney tissue

IF/ICC : HeLa cells,

## Background Information

SUCLG1(succinyl-CoA ligase [ADP/GDP-forming] subunit alpha, mitochondrial) is also named as SCS-alpha and belongs to the succinate/malate CoA ligase alpha subunit family. The SUCLG1 gene encodes a 35 kDa protein with a 40 amino acids transit peptide. This enzyme catalyzes the ATP- or GTP-dependent ligation of succinate and CoA to form succinyl-CoA. Defects in SUCLG1 are the cause of mitochondrial DNA depletion syndrome type 9 (MTDPS9).

## Storage

Storage:

Store at -20°C. Stable for one year after shipment.

Storage Buffer:

PBS with 0.02% sodium azide and 50% glycerol, pH7.3

Aliquoting is unnecessary for -20°C storage

For technical support and original validation data for this product please contact:

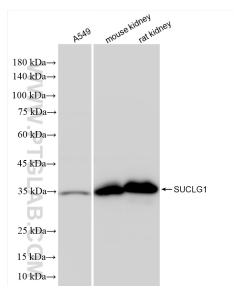
T: 4006900926

E: Proteintech-CN@ptglab.com

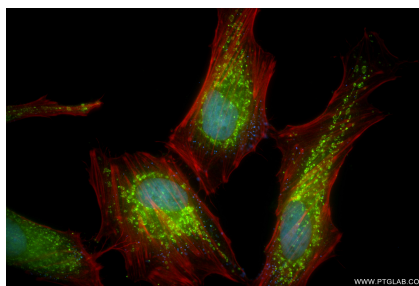
W: ptgcn.com

This product is exclusively available under Proteintech Group brand and is not available to purchase from any other manufacturer.

## Selected Validation Data



Various lysates were subjected to SDS PAGE followed by western blot with 86072-1-RR (SUCLG1 antibody) at dilution of 1:10000 incubated at room temperature for 1.5 hours.



Immunofluorescent analysis of (4% PFA) fixed HeLa cells using SUCLG1 antibody (86072-1-RR, Clone: 250424C8) at dilution of 1:800 and Coralite® 488-Conjugated Goat Anti-Rabbit IgG(H+L) (SA00013-2), CL594-Phalloidin (red).