

For Research Use Only

SUCLG1 Recombinant antibody, PBS Only

Catalog Number: 86072-1-PBS



Basic Information

Catalog Number: 86072-1-PBS	GenBank Accession Number: BC000504	Purification Method: Protein A purification
Concentration: 1 mg/ml	GeneID (NCBI): 8802	CloneNo.: 250424C8
Source: Rabbit	UNIPROT ID: P53597	
Isotype: IgG	Full Name: succinate-CoA ligase, alpha subunit	
Immunogen Catalog Number: AG6481	Calculated MW: 35 kDa	
	Observed MW: 35 kDa	

Applications

Tested Applications:
WB, IF/ICC, Indirect ELISA

Species Specificity:
human, mouse, rat

Background Information

SUCLG1(succinyl-CoA ligase [ADP/GDP-forming] subunit alpha, mitochondrial) is also named as SCS-alpha and belongs to the succinate/malate CoA ligase alpha subunit family. The SUCLG1 gene encodes a 35 kDa protein with a 40 amino acids transit peptide. This enzyme catalyzes the ATP- or GTP-dependent ligation of succinate and CoA to form succinyl-CoA. Defects in SUCLG1 are the cause of mitochondrial DNA depletion syndrome type 9 (MTDPS9).

Storage

Storage:
Store at -80°C.
The product is shipped with ice packs. Upon receipt, store it immediately at -80°C

Storage Buffer:
PBS only, pH7.3

For technical support and original validation data for this product please contact:

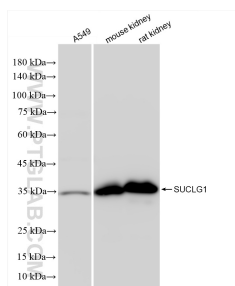
T: 4006900926

E: Proteintech-CN@ptglab.com

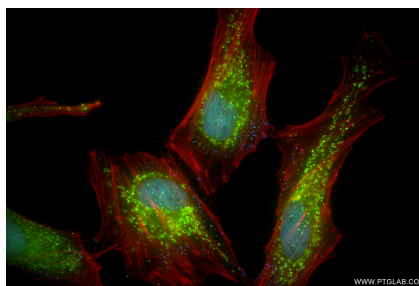
W: ptgcn.com

This product is exclusively available under Proteintech Group brand and is not available to purchase from any other manufacturer.

Selected Validation Data



Various lysates were subjected to SDS PAGE followed by western blot with 86072-1-RR (SUCLG1 antibody) at dilution of 1:10000 incubated at room temperature for 1.5 hours. This data was developed using the same antibody clone with 86072-1-PBS in a different storage buffer formulation.



Immunofluorescent analysis of (4% PFA) fixed HeLa cells using SUCLG1 antibody (86072-1-RR, Clone: 250424C8) at dilution of 1:800 and CoraLite® 488-Conjugated Goat Anti-Rabbit IgG(H+L) (SA00013-2), CL594-Phalloidin (red). This data was developed using the same antibody clone with 86072-1-PBS in a different storage buffer formulation.