

For Research Use Only

Serpin C1/Antithrombin III Recombinant monoclonal antibody, PBS Only (Detector)



Catalog Number: 86067-3-PBS

Basic Information

Catalog Number:

86067-3-PBS

Source:

Rabbit

Isotype:

IgG

Immunogen Catalog Number:

EG3100

GenBank Accession Number:

NM_000488.4

GeneID (NCBI):

462

UNIPROT ID:

P01008

Full Name:

serpin peptidase inhibitor, clade C
(antithrombin), member 1

Calculated MW:

53 kDa

Purification Method:

Protein A purification

CloneNo.:

250574C9

Applications

Tested Applications:

Sandwich ELISA, Indirect ELISA

Species Specificity:

human

Background Information

Storage

Storage:

Store at -80°C.

The product is shipped with ice packs. Upon receipt, store it immediately at -80°C

Storage Buffer:

PBS only, pH7.3

For technical support and original validation data for this product please contact:

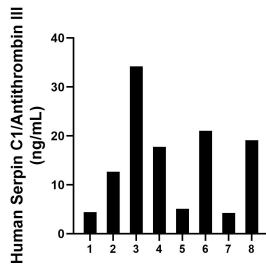
T: 4006900926

E: Proteintech-CN@ptglab.com

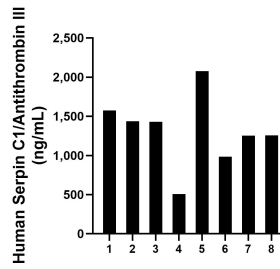
W: ptgcn.com

This product is exclusively available under Proteintech Group brand and is not available to purchase from any other manufacturer.

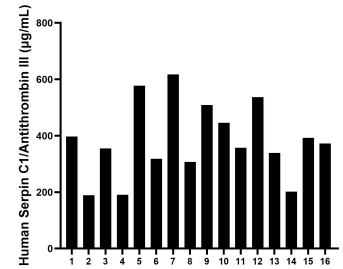
Selected Validation Data



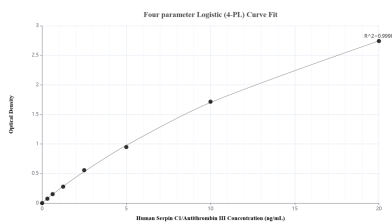
Urine of eight individual healthy human donors was measured. The Serpin C1/Antithrombin III concentration of detected samples was determined to be 14.82 ng/mL with a range of 4.28-34.20 ng/mL.



Human milk of eight individual healthy human donors was measured. The Serpin C1/Antithrombin III concentration of detected samples was determined to be 1,313.73 ng/mL with a range of 505.80-2,074.98 ng/mL.



Serum of sixteen individual healthy human donors was measured. The Serpin C1/Antithrombin III concentration of detected samples was determined to be 381.81 µg/mL with a range of 189.31-617.31 µg/mL.



Sandwich ELISA standard curve of MP02252-2, Human Serpin C1/Antithrombin III Recombinant Matched Antibody Pair - PBS only. 86067-2-PBS was coated to a plate as the capture antibody and incubated with serial dilutions of standard Eg3100. 86067-3-PBS was HRP conjugated as the detection antibody. Range: 0.313-20 ng/mL.