

For Research Use Only

# SERPINC1 Recombinant antibody, PBS Only (Detector)

Catalog Number: 86067-1-PBS



## Basic Information

Catalog Number:

86067-1-PBS

Concentration:

1 mg/ml

Source:

Rabbit

Isotype:

IgG

Immunogen Catalog Number:

EG3100

GenBank Accession Number:

NM\_000488.4

GeneID (NCBI):

462

UNIPROT ID:

P01008

Full Name:

serpin peptidase inhibitor, clade C (antithrombin), member 1

Calculated MW:

53 kDa

Purification Method:

Protein A purification

CloneNo.:

250574E3

## Applications

Tested Applications:

Cytometric bead array, Indirect ELISA, Sample test

Species Specificity:

human

## Background Information

### Storage

Storage:

Store at -80°C.

**The product is shipped with ice packs. Upon receipt, store it immediately at -80°C**

Storage Buffer:

PBS only, pH7.3

For technical support and original validation data for this product please contact:

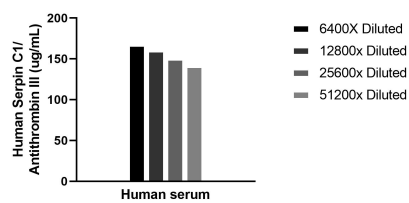
T: 4006900926

E: [Proteintech-CN@ptglab.com](mailto:Proteintech-CN@ptglab.com)

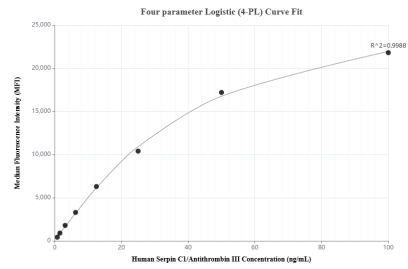
W: [ptgcn.com](http://ptgcn.com)

**This product is exclusively available under Proteintech Group brand and is not available to purchase from any other manufacturer.**

# Selected Validation Data



The mean Serpin C1/Antithrombin III concentration was determined to be 154.3 ug/mL in human serum.



Cytometric bead array standard curve of MP02252-1, Serpin C1/Antithrombin III Recombinant Matched Antibody Pair, PBS Only. Capture antibody: 86067-2-PBS. Detection antibody: 86067-1-PBS. Standard: Eg3100. Range: 0.781-100 ng/mL.