

For Research Use Only

LILRB2 Recombinant antibody, PBS Only (Capture)

Catalog Number: 86066-3-PBS



Basic Information

Catalog Number:

86066-3-PBS

Concentration:

1 mg/ml

Source:

Rabbit

Isotype:

IgG

Immunogen Catalog Number:

EG2839

GenBank Accession Number:

NM_005874.4

GeneID (NCBI):

10288

UNIPROT ID:

Q8N423-1

Full Name:

leukocyte immunoglobulin-like
receptor, subfamily B (with TM and
ITIM domains), member 2

Calculated MW:

65 kDa

Purification Method:

Protein A purification

CloneNo.:

250299G8

Applications

Tested Applications:

Sandwich ELISA, Indirect ELISA, Sample test

Species Specificity:

human

Background Information

Storage

Storage:

Store at -80°C.

The product is shipped with ice packs. Upon receipt, store it immediately at -80°C

Storage Buffer:

PBS only, pH7.3

For technical support and original validation data for this product please contact:

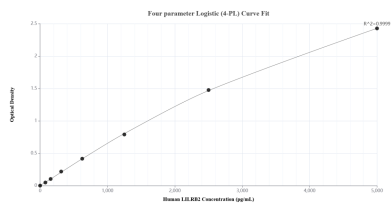
T: 4006900926

E: Proteintech-CN@ptglab.com

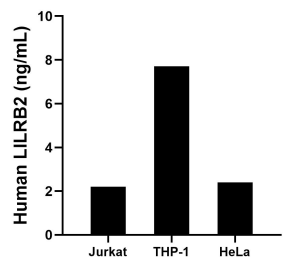
W: ptgcn.com

This product is exclusively available under Proteintech Group brand and is not available to purchase from any other manufacturer.

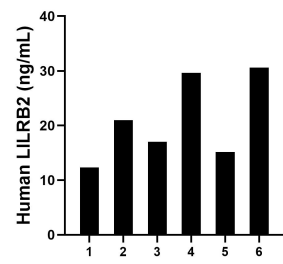
Selected Validation Data



Sandwich ELISA standard curve of MP02254-2, Human LILRB2 Recombinant Matched Antibody Pair - PBS only. 86066-3-PBS was coated to a plate as the capture antibody and incubated with serial dilutions of standard Eg2839. 86066-2-PBS was HRP conjugated as the detection antibody. Range: 78.1-5000 pg/mL.



The mean LILRB2 concentration was determined to be 2.2 ng/mL in Jurkat cell extract based on a 1.2 mg/mL extract load, 7.7 ng/mL in THP-1 cell extract based on a 3.4 mg/mL extract load and 2.4 ng/mL in HeLa cell extract based on a 1.4 mg/mL extract load.



Plasma of six individual healthy human donors was measured. The LILRB2 concentration of detected samples was determined to be 21.0 ng/mL with a range of 12.4-30.6 ng/mL.