

For Research Use Only

PKD2L1 Recombinant monoclonal antibody, PBS Only (Capture)

Catalog Number: 86062-3-PBS



Basic Information

Catalog Number:

86062-3-PBS

Source:

Rabbit

Isotype:

IgG

Immunogen Catalog Number:

AG3807

GenBank Accession Number:

BC025665

GeneID (NCBI):

9033

UNIPROT ID:

Q9POL9

Full Name:

polycystic kidney disease 2-like 1

Calculated MW:

805 aa, 92 kDa

Purification Method:

Protein A purification

CloneNo.:

250486F4

Applications

Tested Applications:

Sandwich ELISA, Indirect ELISA

Species Specificity:

human

Background Information

Storage

Storage:

Store at -80°C.

The product is shipped with ice packs. Upon receipt, store it immediately at -80°C

Storage Buffer:

PBS only, pH7.3

For technical support and original validation data for this product please contact:

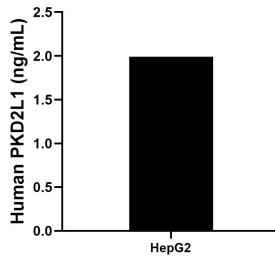
T: 4006900926

E: Proteintech-CN@ptglab.com

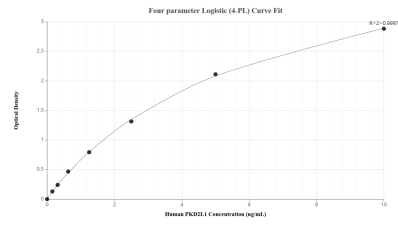
W: ptgcn.com

This product is exclusively available under Proteintech Group brand and is not available to purchase from any other manufacturer.

Selected Validation Data



The mean PKD2L1 concentration was determined to be 1.99 ng/mL in HepG2 cell extract based on a 1.10 mg/mL extract load.



Sandwich ELISA standard curve of MP02508-1, Human PKD2L1 Recombinant Matched Antibody Pair - PBS only. 86062-3-PBS was coated to a plate as the capture antibody and incubated with serial dilutions of standard Ag3807. 86062-1-PBS was HRP conjugated as the detection antibody. Range: 0.156-10 ng/mL.