

For Research Use Only

Mouse Spli Recombinant antibody, PBS Only (Capture)

Catalog Number:86061-2-PBS



Basic Information

Catalog Number: 86061-2-PBS	GenBank Accession Number: NM_011414.3	Purification Method: Protein A purification
Concentration: 1 mg/ml	GeneID (NCBI): 20568	CloneNo.: 250598D1
Source: Rabbit	UNIPROT ID: P97430	
Isotype: IgG	Full Name: secretory leukocyte peptidase inhibitor	
Immunogen Catalog Number: EG2905	Calculated MW: 14 kDa	

Applications

Tested Applications:
Sandwich ELISA, Indirect ELISA, Sample test

Species Specificity:
mouse

Background Information

Storage

Storage:
Store at -80°C.
The product is shipped with ice packs. Upon receipt, store it immediately at -80°C

Storage Buffer:
PBS only, pH7.3

For technical support and original validation data for this product please contact:

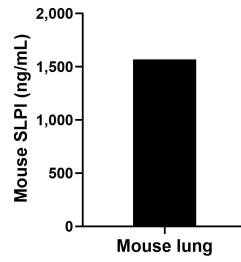
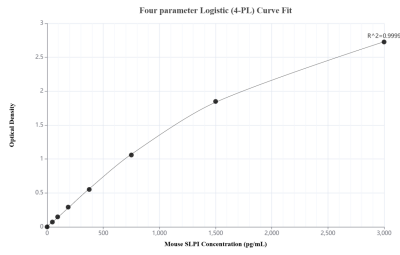
T: 4006900926

E: Proteintech-CN@ptglab.com

W: ptgcn.com

This product is exclusively available under Proteintech Group brand and is not available to purchase from any other manufacturer.

Selected Validation Data



Sandwich ELISA standard curve of MP02393-1, Mouse SLPI Recombinant Matched Antibody Pair - PBS only. 86061-2-PBS was coated to a plate as the capture antibody and incubated with serial dilutions of standard Eg2905. 86061-1-PBS was HRP conjugated as the detection antibody. Range: 46.9-3000 pg/mL

The mean SLPI concentration was determined to be 1,568.0 ng/mL in mouse lung extract based on a 5.9 mg/mL extract load.