

For Research Use Only

FHL2 Recombinant antibody

Catalog Number: 86060-1-RR



Basic Information

Catalog Number:

86060-1-RR

Concentration:

1000 µg/ml

Source:

Rabbit

Isotype:

IgG

Immunogen Catalog Number:

AG29655

GenBank Accession Number:

BC014397

GeneID (NCBI):

2274

UNIPROT ID:

Q14192

Full Name:

four and a half LIM domains 2

Calculated MW:

32 kDa

Observed MW:

30-32 kDa

Purification Method:

Protein A purification

CloneNo.:

250585E1

Recommended Dilutions:

WB: 1:5000-1:50000

Applications

Tested Applications:

WB, ELISA

Species Specificity:

human, mouse

Positive Controls:

WB : HeLa cells, PANC-1 cells, U2OS cells, hTERT-RPE1 cells, MG-63 cells, NIH/3T3 cells

Background Information

FHL2(Four and a half LIM domains protein 2), also known as DRAL. It is located in cytoplasm and nucleus. The protein is expressed in skeletal muscle and heart. May function as a molecular transmitter linking various signaling pathways to transcriptional regulation. Negatively regulates the transcriptional repressor E4F1 and may function in cell growth. Inhibits the transcriptional activity of FOXO1 and its apoptotic function by enhancing the interaction of FOXO1 with SIRT1 and FOXO1 deacetylation. Negatively regulates the calcineurin/NFAT signaling pathway in cardiomyocytes (PMID: 28717008). The molecular weight of FHL2 is 32 kDa.

Storage

Storage:

Store at -20°C. Stable for one year after shipment.

Storage Buffer:

PBS with 0.02% sodium azide and 50% glycerol, pH7.3

Aliquoting is unnecessary for -20°C storage

For technical support and original validation data for this product please contact:

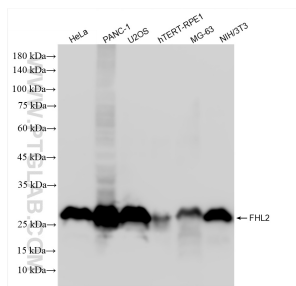
T: 4006900926

E: Proteintech-CN@ptglab.com

W: ptgcn.com

This product is exclusively available under Proteintech Group brand and is not available to purchase from any other manufacturer.

Selected Validation Data



Various lysates were subjected to SDS PAGE followed by western blot with 86060-1-RR (FHL2 antibody) at dilution of 1:10000 incubated at room temperature for 1.5 hours.