

For Research Use Only

Peripherin Recombinant antibody, PBS Only (Detector)

Catalog Number: 86057-1-PBS



Basic Information

Catalog Number:	86057-1-PBS	GenBank Accession Number:	BC032703	Purification Method:	Protein A purification
Concentration:	1 mg/ml	GeneID (NCBI):	5630	CloneNo.:	250661A3
Source:	Rabbit	UNIPROT ID:	P41219		
Isotype:	IgG	Full Name:	peripherin		
Immunogen Catalog Number:	AG11365	Calculated MW:	470 aa, 54 kDa		
		Observed MW:	54-60 kDa		

Applications

Tested Applications:
WB, Cytometric bead array, Indirect ELISA, Sample test

Species Specificity:
human, mouse, rat

Background Information

Peripherin is a neuron-specific intermediate filament protein that is particularly expressed in peripheral nervous system. It is used to study peripheral nerve development and regeneration, as it is highly expressed during elongation of axon. Peripherin is a routine marker for unmyelinated neurons in trigeminal ganglion (TG) and the dorsal root ganglion (DRG). Peripherin is also expressed in peri-insular areas of islets and it has been identified as a key autoantigen for type 1A diabetes.

Storage

Storage:
Store at -80°C.
The product is shipped with ice packs. Upon receipt, store it immediately at -80°C

Storage Buffer:
PBS only, pH7.3

For technical support and original validation data for this product please contact:

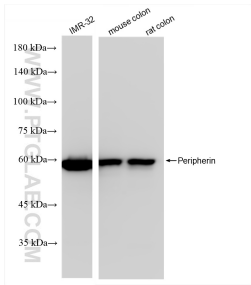
T: 4006900926

E: Proteintech-CN@ptglab.com

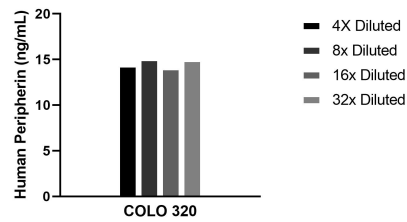
W: ptgcn.com

This product is exclusively available under Proteintech Group brand and is not available to purchase from any other manufacturer.

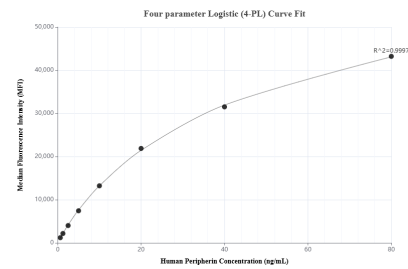
Selected Validation Data



Various lysates were subjected to SDS PAGE followed by western blot with 86057-1-RR (Peripheral antibody) at dilution of 1:10000 incubated at room temperature for 1.5 hours. This data was developed using the same antibody clone with 86057-1-PBS in a different storage buffer formulation.



The mean Peripherin concentration was determined to be 14.5 ng/mL in COLO 320 cell extract based on a 1.5 mg/mL extract load.



Cytometric bead array standard curve of MP02242-1, Peripherin Recombinant Matched Antibody Pair, PBS Only. Capture antibody: 86057-2-PBS. Detection antibody: 86057-1-PBS. Standard: Ag11365. Range: 0.625-80 ng/mL