

For Research Use Only

GYG1 Recombinant antibody, PBS Only

Catalog Number: 86056-1-PBS



Basic Information

Catalog Number:

86056-1-PBS

Concentration:

1 mg/ml

Source:

Rabbit

Isotype:

IgG

Immunogen Catalog Number:

AG3583

GenBank Accession Number:

BC031096

GeneID (NCBI):

2992

UNIPROT ID:

P46976

Full Name:

glycogenin 1

Calculated MW:

350 aa, 39 kDa

Observed MW:

39 kDa

Purification Method:

Protein A purification

CloneNo.:

250590C9

Applications

Tested Applications:

WB, Indirect ELISA

Species Specificity:

human

Background Information

The GYG1 gene encodes glycogenin-1, a core protein in muscle glycogen particles. GYG1 is a glycosyltransferase that forms a short glucose polymer of approximately 10 glucose residues by autoglucosylation (PMID: 25272951). Cardiomyopathy and muscle weakness associated with muscle glycogen depletion can also be caused by impaired priming of glycogen synthesis due to inactivation of muscle glycogenin (glycogenin-1) (PMID: 20357282).

Storage

Storage:

Store at -80°C.

The product is shipped with ice packs. Upon receipt, store it immediately at -80°C

Storage Buffer:

PBS only, pH7.3

For technical support and original validation data for this product please contact:

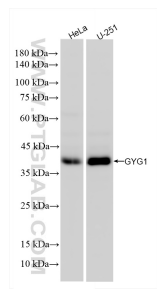
T: 4006900926

E: Proteintech-CN@ptglab.com

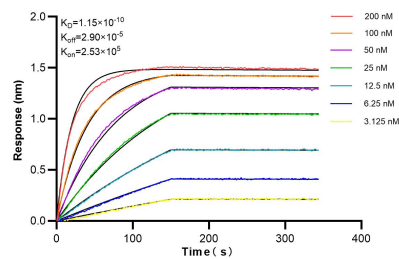
W: ptgcn.com

This product is exclusively available under Proteintech Group brand and is not available to purchase from any other manufacturer.

Selected Validation Data



Various lysates were subjected to SDS PAGE followed by western blot with 86056-1-RR (GYG1 antibody) at dilution of 1:3000 incubated at room temperature for 1.5 hours. This data was developed using the same antibody clone with 86056-1-PBS in a different storage buffer formulation.



Biolayer interferometry (BLI) kinetic assays of 86056-1-RR against Human GYG1 were performed. The affinity constant is 0.115 nM.