

CD3 epsilon Recombinant monoclonal antibody

Catalog Number: 86053-1-RR

Basic Information

Catalog Number: 86053-1-RR	GenBank Accession Number: NP_001101610.2	Purification Method: Protein A purification
Source: Rabbit	GeneID (NCBI): 315609	CloneNo.: 242849D3
Isotype: IgG	UNIPROT ID: A6J423	Recommended Dilutions: WB: 1:2000-1:10000 IHC: 1:500-1:2000 IF-P: 1:500-1:2000
Immunogen Catalog Number: EG1450	Full Name: CD3 molecule, epsilon polypeptide	
	Calculated MW: 22kDa	
	Observed MW: 22 kDa	

Applications

Tested Applications:

WB, IHC, IF-P, ELISA

Species Specificity:

mouse, rat

Note-IHC: suggested antigen retrieval with TE buffer pH 9.0; (*) Alternatively, antigen retrieval may be performed with citrate buffer pH 6.0

Positive Controls:

WB : rat thymus tissue, CTLL-2 cells, mouse thymus tissue, rat spleen tissue

IHC : rat spleen tissue, rat thymus tissue

IF-P : rat thymus tissue, rat spleen tissue

Background Information

CD3 is a multimeric protein associated with the T-cell receptor (TCR) to form a complex involved in antigen recognition and signal transduction (PMID: 15885124). CD3 is composed of CD3 γ , δ , ϵ , and ζ chains (PMID: 1826255). It is expressed by thymocytes in a developmentally regulated manner, T cells, and some NK cells (PMID: 3289580). The TCR recognizes antigens bound to major histocompatibility complex (MHC) molecules. TCR-mediated peptide-MHC recognition is transmitted to the CD3 complex, leading to the intracellular signal transduction (PMID: 11985657). This antibody was raised against the epsilon chain of rat CD3 molecule.

Storage

Storage:

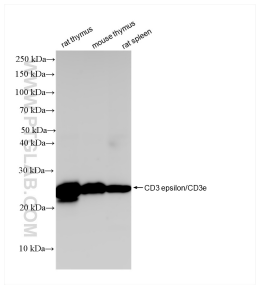
Store at -20°C. Stable for one year after shipment.

Storage Buffer:

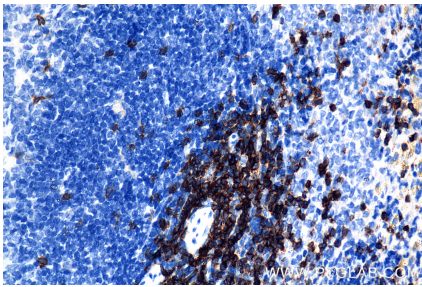
PBS with 0.02% sodium azide and 50% glycerol, pH7.3

Aliquoting is unnecessary for -20°C storage

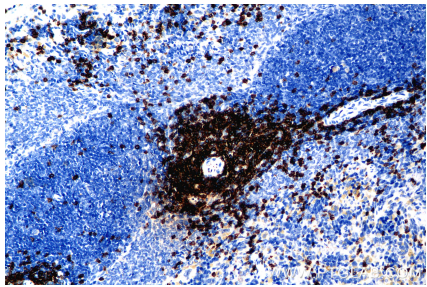
Selected Validation Data



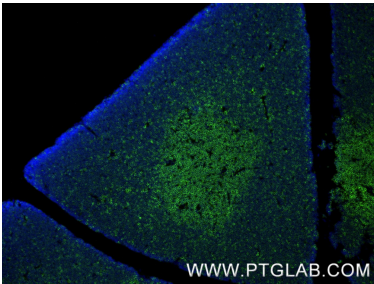
Various lysates were subjected to SDS PAGE followed by western blot with 86053-1-RR (CD3 epsilon/CD3e antibody) at dilution of 1:5000 incubated at room temperature for 1.5 hours.



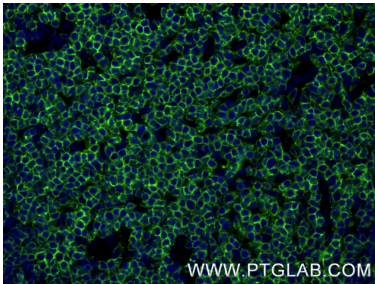
Immunohistochemical analysis of paraffin-embedded rat spleen tissue slide using 86053-1-RR (CD3 epsilon antibody) at dilution of 1:1000 (under 40x lens). Heat mediated antigen retrieval with Tris-EDTA buffer (pH 9.0).



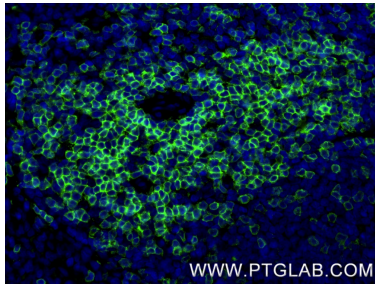
Immunohistochemical analysis of paraffin-embedded rat thymus tissue slide using 86053-1-RR (CD3 epsilon antibody) at dilution of 1:1000 (under 20x lens). Heat mediated antigen retrieval with Tris-EDTA buffer (pH 9.0).



Immunofluorescent analysis of (4% PFA) fixed paraffin-embedded rat thymus tissue using CD3 epsilon antibody (86053-1-RR, Clone: 242849D3) at dilution of 1:1000 and CoraLite®488-Conjugated Goat Anti-Rabbit IgG(H+L) (SA00013-2). Heat mediated antigen retrieval with Tris-EDTA buffer (pH 9.0).



Immunofluorescent analysis of (4% PFA) fixed paraffin-embedded rat spleen tissue using CD3 epsilon antibody (86053-1-RR, Clone: 242849D3) at dilution of 1:1000 and CoraLite®488-Conjugated Goat Anti-Rabbit IgG(H+L) (SA00013-2). Heat mediated antigen retrieval with Tris-EDTA buffer (pH 9.0).



Immunofluorescent analysis of (4% PFA) fixed paraffin-embedded rat thymus tissue using CD3 epsilon antibody (86053-1-RR, Clone: 242849D3) at dilution of 1:1000 and CoraLite®488-Conjugated Goat Anti-Rabbit IgG(H+L) (SA00013-2). Heat mediated antigen retrieval with Tris-EDTA buffer (pH 9.0).