

For Research Use Only

Napsin A Recombinant antibody

Catalog Number: 86052-1-RR



Basic Information

Catalog Number:

86052-1-RR

Concentration:

1000 µg/ml

Source:

Rabbit

Isotype:

IgG

Immunogen Catalog Number:

AG9721

GenBank Accession Number:

BC017842

GeneID (NCBI):

9476

UNIPROT ID:

O96009

Full Name:

napsin A aspartic peptidase

Calculated MW:

420 aa, 45 kDa

Observed MW:

40-45 kDa

Purification Method:

Protein A purification

CloneNo.:

242433D1

Recommended Dilutions:

WB: 1:1000-1:6000

Applications

Tested Applications:

WB, ELISA

Species Specificity:

human

Positive Controls:

WB : A549 cells, K-562 cells, human kidney tissue

Background Information

Napsin is found in two isoforms, napsin A and B, with highly homologous nucleotide sequences (91.2%). Napsin A appears to be a functional proteinase, predominantly expressed in lung and kidney. Napsin B is transcribed exclusively in cells related to the immune system and lacks an in-frame stop codon and is believed to be a pseudogene.(PMID:12698189). Napsin A is superior to TTF-1 in distinguishing primary lung ACA from other carcinomas (except kidney), particularly primary lung small cell carcinoma, and primary thyroid carcinoma. (PMID:22288963).

Storage

Storage:

Store at -20°C. Stable for one year after shipment.

Storage Buffer:

PBS with 0.02% sodium azide and 50% glycerol, pH7.3

Aliquoting is unnecessary for -20°C storage

For technical support and original validation data for this product please contact:

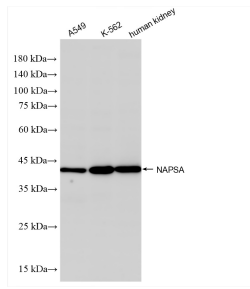
T: 4006900926

E: Proteintech-CN@ptglab.com

W: ptgcn.com

This product is exclusively available under Proteintech Group brand and is not available to purchase from any other manufacturer.

Selected Validation Data



Various lysates were subjected to SDS PAGE followed by western blot with 86052-1-RR (NAPSA antibody) at dilution of 1:3000 incubated at room temperature for 1.5 hours.