

For Research Use Only

PRIM1 Recombinant antibody

Catalog Number: 86051-1-RR



Basic Information

Catalog Number:

86051-1-RR

Concentration:

1000 µg/ml

Source:

Rabbit

Isotype:

IgG

Immunogen Catalog Number:

AG1124

GenBank Accession Number:

BC005266

GeneID (NCBI):

5557

UNIPROT ID:

P49642

Full Name:

primase, DNA, polypeptide 1 (49kDa)

Calculated MW:

50 kDa

Observed MW:

50 kDa

Purification Method:

Protein A purification

CloneNo.:

250690B8

Recommended Dilutions:

WB: 1:2000-1:10000

Applications

Tested Applications:

WB, ELISA

Species Specificity:

human, mouse

Positive Controls:

WB : HeLa cells, HepG2 cells, Jurkat cells, K-562 cells, Sp2/O cells, MIH/3T3 cells

Background Information

DNA replication in human cells is initiated by a complex apparatus containing a DNA polymerase-alpha/primase complex. Primase synthesizes oligoribonucleotides that serve as primers for the initiation of DNA synthesis. It plays a role in both the initiation of DNA replication and the synthesis of Okazaki fragments for lagging strand synthesis. PRIM1 is a subunit of this complex.

Storage

Storage:

Store at -20°C. Stable for one year after shipment.

Storage Buffer:

PBS with 0.02% sodium azide and 50% glycerol, pH7.3

Aliquoting is unnecessary for -20°C storage

For technical support and original validation data for this product please contact:

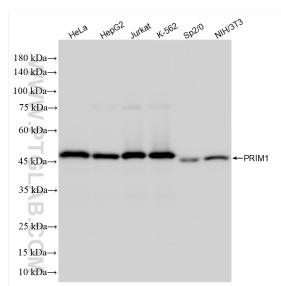
T: 4006900926

E: Proteintech-CN@ptglab.com

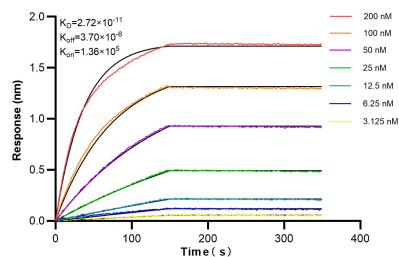
W: ptgcn.com

This product is exclusively available under Proteintech Group brand and is not available to purchase from any other manufacturer.

Selected Validation Data



Various lysates were subjected to SDS PAGE followed by western blot with 86051-1-RR (PRIM1 antibody) at dilution of 1:5000 incubated at room temperature for 1.5 hours.



Biolayer interferometry (BLI) kinetic assays of 86051-1-RR against Human PRIM1 were performed. The affinity constant is 27.2 pM.