

For Research Use Only

PRIM1 Recombinant antibody, PBS Only

Catalog Number: 86051-1-PBS



Basic Information

Catalog Number:	86051-1-PBS	GenBank Accession Number:	BC005266	Purification Method:	Protein A purification
Concentration:	1 mg/ml	GeneID (NCBI):	5557	CloneNo.:	25069088
Source:	Rabbit	UNIPROT ID:	P49642		
Isotype:	IgG	Full Name:	primase, DNA, polypeptide 1 (49kDa)		
Immunogen Catalog Number:	AG1124	Calculated MW:	50 kDa		
		Observed MW:	50 kDa		

Applications

Tested Applications:
WB, Indirect ELISA

Species Specificity:
human, mouse

Background Information

DNA replication in human cells is initiated by a complex apparatus containing a DNA polymerase-alpha/primase complex. Primase synthesizes oligoribonucleotides that serve as primers for the initiation of DNA synthesis. It plays a role in both the initiation of DNA replication and the synthesis of Okazaki fragments for lagging strand synthesis. PRIM1 is a subunit of this complex.

Storage

Storage:
Store at -80°C.
The product is shipped with ice packs. Upon receipt, store it immediately at -80°C

Storage Buffer:
PBS only, pH7.3

For technical support and original validation data for this product please contact:

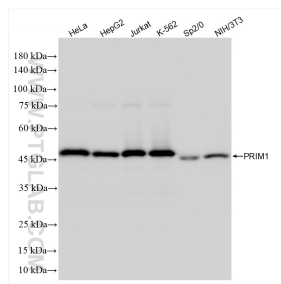
T: 4006900926

E: Proteintech-CN@ptglab.com

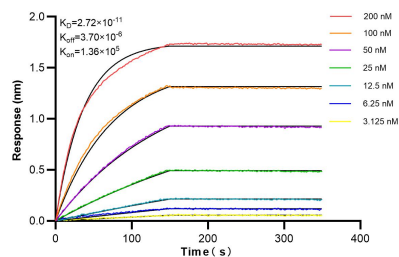
W: ptgcn.com

This product is exclusively available under Proteintech Group brand and is not available to purchase from any other manufacturer.

Selected Validation Data



Various lysates were subjected to SDS PAGE followed by western blot with 86051-1-RR (PRIM1 antibody) at dilution of 1:5000 incubated at room temperature for 1.5 hours. This data was developed using the same antibody clone with 86051-1-PBS in a different storage buffer formulation.



Biolayer interferometry (BLI) kinetic assays of 86051-1-RR against Human PRIM1 were performed. The affinity constant is 27.2 pM.