

For Research Use Only

SLC27A3 Recombinant monoclonal antibody, PBS Only (Detector)

Catalog Number: 86047-2-PBS



Basic Information

| | | |
|--|--|---|
| Catalog Number: 86047-2-PBS | GenBank Accession Number: BC029792 | Purification Method: Protein A purification |
| Source: Rabbit | GeneID (NCBI): 11000 | CloneNo.: 250628F10 |
| Isotype: IgG | UNIPROT ID: Q5K4L6 | |
| Immunogen Catalog Number: AG4015 | Full Name: solute carrier family 27 (fatty acid transporter), member 3 | |
| | Calculated MW: 75 kDa | |

Applications

Tested Applications:
Cytometric bead array, Indirect ELISA

Species Specificity:
human

Background Information

Storage

Storage:
Store at -80°C.
The product is shipped with ice packs. Upon receipt, store it immediately at -80°C

Storage Buffer:
PBS only, pH7.3

For technical support and original validation data for this product please contact:

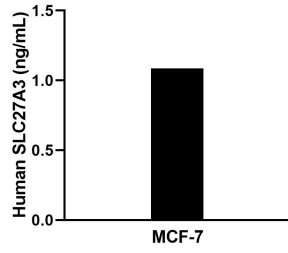
T: 4006900926

E: Proteintech-CN@ptglab.com

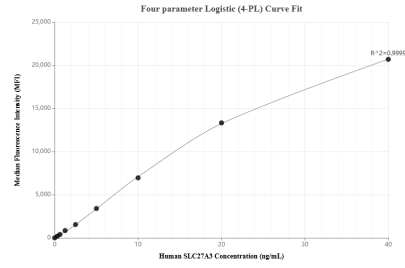
W: ptgcn.com

This product is exclusively available under Proteintech Group brand and is not available to purchase from any other manufacturer.

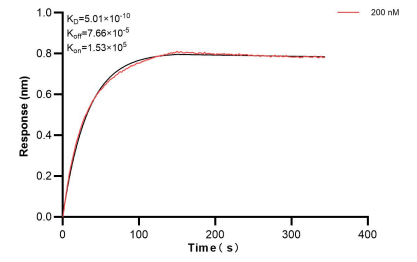
Selected Validation Data



The mean SLC27A3 concentration was determined to be 1.1 ng/mL in MCF-7 cell extract based on a 1.2 mg/mL extract load.



Cytometric bead array standard curve of MP02758-1, SLC27A3 Recombinant Matched Antibody Pair, PBS Only. Capture antibody: 86047-3-PBS. Detection antibody: 86047-2-PBS. Standard: Ag4015. Range: 0.312-40 ng/mL.



Bi-layer interferometry (BLI) kinetic assay of 86047-2-PBS against Human SLC27A3 was performed. The affinity constant is 0.501 nM.