

For Research Use Only

# SERPINF2 Recombinant antibody, PBS Only (Capture)

Catalog Number: 86042-2-PBS



## Basic Information

Catalog Number:

86042-2-PBS

Concentration:

1 mg/ml

Source:

Rabbit

Isotype:

IgG

Immunogen Catalog Number:

EG3041

GenBank Accession Number:

NM\_000934.4

GeneID (NCBI):

5345

UNIPROT ID:

P08697-1

Full Name:

serpin peptidase inhibitor, clade F  
(alpha-2 antiplasmin, pigment  
epithelium derived factor), member 2

Calculated MW:

55 kDa

Purification Method:

Protein A purification

CloneNo.:

250548E4

## Applications

Tested Applications:

Cytometric bead array, Indirect ELISA, Sample test

Species Specificity:

human

## Background Information

### Storage

Storage:

Store at -80°C.

**The product is shipped with ice packs. Upon receipt, store it immediately at -80°C**

Storage Buffer:

PBS only, pH7.3

For technical support and original validation data for this product please contact:

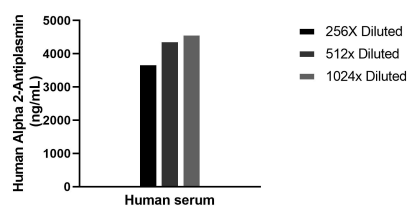
T: 4006900926

E: Proteintech-CN@ptglab.com

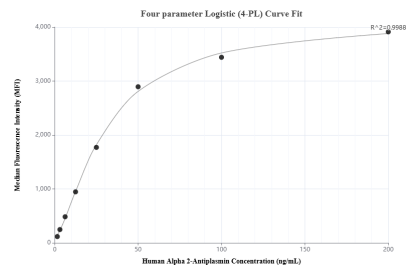
W: ptgcn.com

**This product is exclusively available under Proteintech Group brand and is not available to purchase from any other manufacturer.**

## Selected Validation Data



The mean Alpha 2-Antiplasmin concentration was determined to be 4232.6 ng/mL in human serum.



Cytometric bead array standard curve of MP02257-1, Alpha 2-Antiplasmin Recombinant Matched Antibody Pair, PBS Only. Capture antibody: 86042-2-PBS. Detection antibody: 86042-1-PBS. Standard: Eg3041. Range: 1.563-200 ng/mL.