

For Research Use Only

CHMP1B Recombinant monoclonal antibody, PBS Only (Capture)

Catalog Number:86031-3-PBS



Basic Information

Catalog Number: 86031-3-PBS	GenBank Accession Number: BC065933	Purification Method: Protein A purification
Source: Rabbit	GeneID (NCBI): 57132	CloneNo.: 250441E10
Isotype: IgG	UNIPROT ID: Q7LBR1	
Immunogen Catalog Number: AG6222	Full Name: chromatin modifying protein 1B	
	Calculated MW: 22 kDa	

Applications

Tested Applications:
Cytometric bead array, Indirect ELISA

Species Specificity:
human

Background Information

Storage

Storage:
Store at -80°C.
The product is shipped with ice packs. Upon receipt, store it immediately at -80°C

Storage Buffer:
PBS only, pH7.3

For technical support and original validation data for this product please contact:

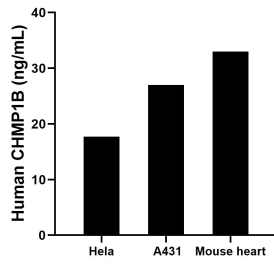
T: 4006900926

E: Proteintech-CN@ptglab.com

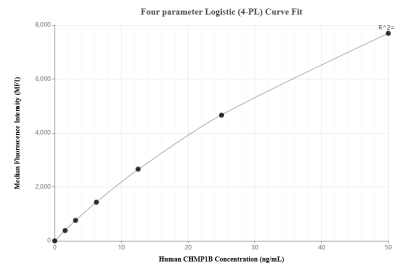
W: ptgcn.com

This product is exclusively available under Proteintech Group brand and is not available to purchase from any other manufacturer.

Selected Validation Data



The mean CHMP1B concentration was determined to be 17.7 ng/mL in HeLa cell extract based on a 1.2 mg/mL extract load, 27.0 ng/mL in A431 cell extract based on a 1.2 mg/mL extract load, 33.0 ng/mL in mouse heart tissue extract based on a 5.4 mg/mL extract load.



Cytometric bead array standard curve of MP02825-1, CHMP1B Recombinant Matched Antibody Pair, PBS Only. Capture antibody: 86031-3-PBS. Detection antibody: 86031-2-PBS. Standard: Ag6222. Range: 1.562-50 ng/mL.