

For Research Use Only

# Mouse CD8 beta Recombinant monoclonal antibody, PBS Only (Detector)

Catalog Number: 86024-2-PBS

## Basic Information

Catalog Number: 86024-2-PBS	GenBank Accession Number: NM_009858.2	Purification Method: Protein A purification
Source: Rabbit	GeneID (NCBI): 12526	CloneNo.: 250480D12
Isotype: IgG	UNIPROT ID: P10300	
Immunogen Catalog Number: EG4275	Full Name: CD8 antigen, beta chain 1	
	Calculated MW: 24 kDa	

## Applications

**Tested Applications:**  
Cytometric bead array, Indirect ELISA

**Species Specificity:**  
mouse

## Background Information

### Storage

**Storage:**  
Store at -80°C.  
**The product is shipped with ice packs. Upon receipt, store it immediately at -80°C**

**Storage Buffer:**  
PBS only, pH7.3

For technical support and original validation data for this product please contact:

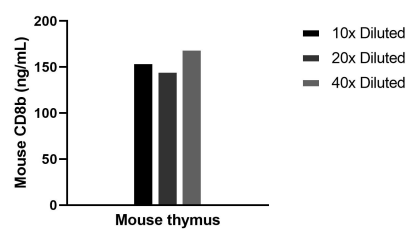
T: 4006900926

E: [Proteintech-CN@ptglab.com](mailto:Proteintech-CN@ptglab.com)

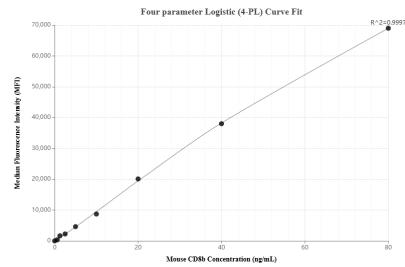
W: [ptgcn.com](http://ptgcn.com)

**This product is exclusively available under Proteintech Group brand and is not available to purchase from any other manufacturer.**

## Selected Validation Data



The mean CD8b concentration was determined to be 157.0 ng/mL in Mouse thymus tissue extract based on a 5.8 mg/mL extract load.



Cytometric bead array standard curve of MP02794-1, MOUSE CD8b Recombinant Matched Antibody Pair, PBS Only. Capture antibody: 86024-1-PBS. Detection antibody: 86024-2-PBS. Standard: Eg4275. Range: 0.625-80 ng/mL.