

For Research Use Only

# KDM5C Recombinant monoclonal antibody, PBS Only (Capture)

Catalog Number:86017-3-PBS



## Basic Information

<b>Catalog Number:</b> 86017-3-PBS	<b>GenBank Accession Number:</b> BC054499	<b>Purification Method:</b> Protein A purification
<b>Source:</b> Rabbit	<b>GeneID (NCBI):</b> 8242	<b>CloneNo.:</b> 250484E10
<b>Isotype:</b> IgG	<b>UNIPROT ID:</b> P41229	
<b>Immunogen Catalog Number:</b> AG5791	<b>Full Name:</b> lysine (K)-specific demethylase 5C	
	<b>Calculated MW:</b> 176 kDa	

## Applications

**Tested Applications:**  
Sandwich ELISA, Indirect ELISA

**Species Specificity:**  
human

## Background Information

### Storage

**Storage:**  
Store at -80°C.  
**The product is shipped with ice packs. Upon receipt, store it immediately at -80°C**

**Storage Buffer:**  
PBS only, pH7.3

For technical support and original validation data for this product please contact:

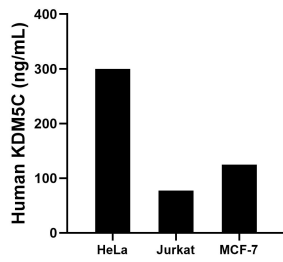
T: 4006900926

E: [Proteintech-CN@ptglab.com](mailto:Proteintech-CN@ptglab.com)

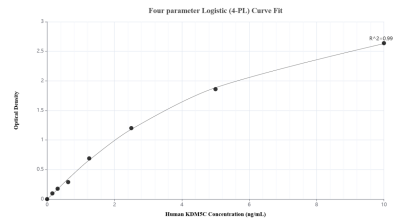
W: [ptgcn.com](http://ptgcn.com)

**This product is exclusively available under Proteintech Group brand and is not available to purchase from any other manufacturer.**

## Selected Validation Data



The mean KDM5C concentration was determined to be 299.61 ng/mL in HeLa cell extract based on a 1.10 mg/mL extract load, 77.16 ng/mL in Jurkat cell extract based on a 1.20 mg/mL extract load and 124.98 ng/mL in MCF-7 cell extract based on a 1.30 mg/mL extract load.



Sandwich ELISA standard curve of MP02624-1, Human KDM5C Recombinant Matched Antibody Pair - PBS only. 86017-3-PBS was coated to a plate as the capture antibody and incubated with serial dilutions of standard Ag5791. 86017-2-PBS was HRP conjugated as the detection antibody. Range: 0.156-10 ng/mL.