

For Research Use Only

KDM5C Recombinant monoclonal antibody, PBS Only (Detector)

Catalog Number:86017-2-PBS



Basic Information

Catalog Number: 86017-2-PBS	GenBank Accession Number: BC054499	Purification Method: Protein A purification
Source: Rabbit	GeneID (NCBI): 8242	CloneNo.: 250484D1
Isotype: IgG	UNIPROT ID: P41229	
Immunogen Catalog Number: AG5791	Full Name: lysine (K)-specific demethylase 5C	
	Calculated MW: 176 kDa	

Applications

Tested Applications:
Sandwich ELISA, Indirect ELISA

Species Specificity:
human

Background Information

Storage

Storage:
Store at -80°C.
The product is shipped with ice packs. Upon receipt, store it immediately at -80°C

Storage Buffer:
PBS only, pH7.3

For technical support and original validation data for this product please contact:

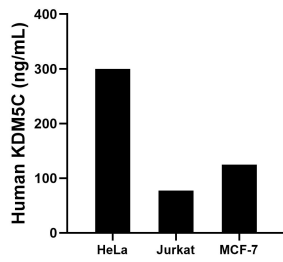
T: 4006900926

E: Proteintech-CN@ptglab.com

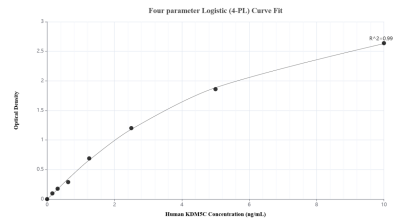
W: ptgcn.com

This product is exclusively available under Proteintech Group brand and is not available to purchase from any other manufacturer.

Selected Validation Data



The mean KDM5C concentration was determined to be 299.61 ng/mL in HeLa cell extract based on a 1.10 mg/mL extract load, 77.16 ng/mL in Jurkat cell extract based on a 1.20 mg/mL extract load and 124.98 ng/mL in MCF-7 cell extract based on a 1.30 mg/mL extract load.



Sandwich ELISA standard curve of MP02624-1, Human KDM5C Recombinant Matched Antibody Pair - PBS only. 86017-3-PBS was coated to a plate as the capture antibody and incubated with serial dilutions of standard Ag5791. 86017-2-PBS was HRP conjugated as the detection antibody. Range: 0.156-10 ng/mL.