

For Research Use Only

SMARCC1 Recombinant antibody, PBS Only (Detector)

Catalog Number: 86015-2-PBS



Basic Information

Catalog Number:

86015-2-PBS

Concentration:

1 mg/ml

Source:

Rabbit

Isotype:

IgG

Immunogen Catalog Number:

AG12109

GenBank Accession Number:

BC050564

GeneID (NCBI):

6599

UNIPROT ID:

Q92922

Full Name:

SWI/SNF related, matrix associated,
actin dependent regulator of
chromatin, subfamily c, member 1

Calculated MW:

1105 aa, 123 kDa

Purification Method:

Protein A purification

CloneNo.:

250455C8

Applications

Tested Applications:

Cytometric bead array, Sandwich ELISA, Indirect ELISA,
Sample test

Species Specificity:

human

Background Information

Storage

Storage:

Store at -80°C.

The product is shipped with ice packs. Upon receipt, store it immediately at -80°C

Storage Buffer:

PBS only, pH7.3

For technical support and original validation data for this product please contact:

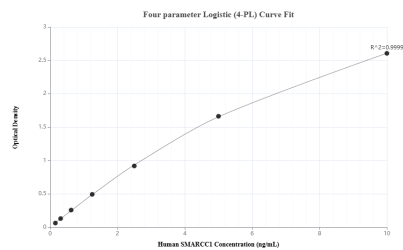
T: 4006900926

E: Proteintech-CN@ptglab.com

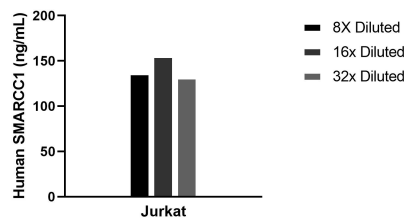
W: ptgcn.com

This product is exclusively available under Proteintech Group brand and is not available to purchase from any other manufacturer.

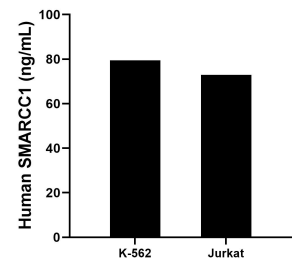
Selected Validation Data



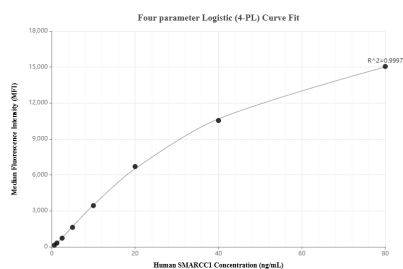
Sandwich ELISA standard curve of MP02222-2, Human SMARCC1 Recombinant Matched Antibody Pair - PBS only. 86015-3-PBS was coated to a plate as the capture antibody and incubated with serial dilutions of standard Ag12109. 86015-2-PBS was HRP conjugated as the detection antibody. Range: 0.156-10 ng/mL



The mean SMARCC1 concentration was determined to be 130.2 ng/mL in Jurkat cell extract based on a 2.2 mg/mL extract load.



The mean SMARCC1 concentration was determined to be 79.50 ng/mL in K-562 cell extract based on a 3.0 mg/mL extract load and 72.90 ng/mL in Jurkat cell extract based on a 2.2 mg/mL extract load.



Cytometric bead array standard curve of MP02222-1, SMARCC1 Recombinant Matched Antibody Pair, PBS Only. Capture antibody: 86015-1-PBS. Detection antibody: 86015-2-PBS. Standard: Ag12109. Range: 0.625-80 ng/mL