

For Research Use Only

SMARCC1 Recombinant antibody

Catalog Number: 86015-1-RR



Basic Information

Catalog Number: 86015-1-RR	GenBank Accession Number: BC050564	Purification Method: Protein A purification
Concentration: 1000 µg/ml	GeneID (NCBI): 6599	CloneNo.: 250455A1
Source: Rabbit	UNIPROT ID: Q92922	Recommended Dilutions: WB: 1:5000-1:50000 IF/ICC: 1:250-1:1000
Isotype: IgG	Full Name: SWI/SNF related, matrix associated, actin dependent regulator of chromatin, subfamily c, member 1	
Immunogen Catalog Number: AG12109	Calculated MW: 1105 aa, 123 kDa Observed MW: 155-160 kDa	

Applications

Tested Applications: WB, IF/ICC, ELISA	Positive Controls:
Species Specificity: human, mouse, rat	WB : Neuro-2a cells, mouse brain tissue, rat brain tissue IF/ICC : Jurkat cells,

Background Information

SMARCC1, also named as SWI/SNF complex 155 kDa subunit or BAF155, is a 1105 amino acid protein, which belongs to the SMARCC family. SMARCC1 is expressed in brain, heart, muscle, placenta, lung, liver, muscle, kidney and pancreas. SMARCC1 is involved in transcriptional activation and repression of select genes by chromatin remodeling. SMARCC1 may stimulate the ATPase activity of the catalytic subunit of the complex. SMARCC1 belongs to the neural progenitors-specific chromatin remodeling complex (npBAF complex) and the neuron-specific chromatin remodeling complex (nBAF complex). The calculated molecular weight of TCEA1 is 123 kDa, but modified SMARCC1 is about 155-160 kDa. (PMID: 24025402)

Storage

Storage:
Store at -20°C. Stable for one year after shipment.
Storage Buffer:
PBS with 0.02% sodium azide and 50% glycerol, pH7.3
Aliquoting is unnecessary for -20°C storage

For technical support and original validation data for this product please contact:

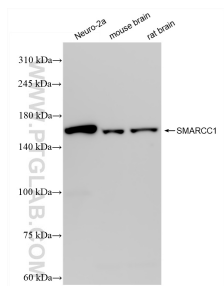
T: 4006900926

E: Proteintech-CN@ptglab.com

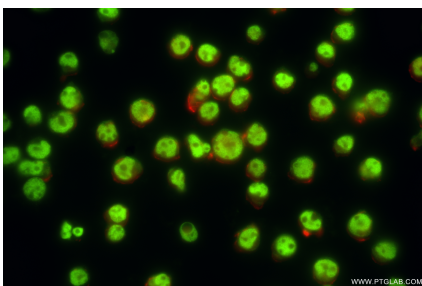
W: ptgcn.com

This product is exclusively available under Proteintech Group brand and is not available to purchase from any other manufacturer.

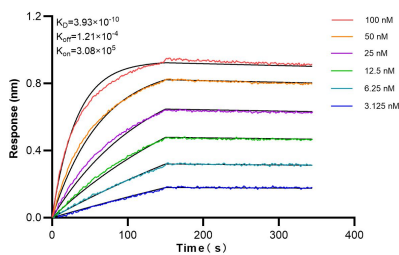
Selected Validation Data



Various lysates were subjected to SDS PAGE followed by western blot with 86015-1-RR (SMARCC1 antibody) at dilution of 1:10000 incubated at room temperature for 1.5 hours.



Immunofluorescent analysis of (4% PFA) fixed Jurkat cells using SMARCC1 antibody (86015-1-RR, Clone: 250455A1) at dilution of 1:500 and CoraLite® 488-Conjugated Goat Anti-Rabbit IgG(H+L) (SA00013-2), CL594-Phalloidin (red).



Biolayer interferometry (BLI) kinetic assays of 86015-1-RR against Human SMARCC1 were performed. The affinity constant is 0.393 nM.