

For Research Use Only

# SMARCC1 Recombinant antibody, PBS Only (Capture)

Catalog Number: 86015-1-PBS



## Basic Information

<b>Catalog Number:</b> 86015-1-PBS	<b>GenBank Accession Number:</b> BC050564	<b>Purification Method:</b> Protein A purification
<b>Concentration:</b> 1000 µg/ml	<b>GeneID (NCBI):</b> 6599	<b>CloneNo.:</b> 250455A1
<b>Source:</b> Rabbit	<b>UNIPROT ID:</b> Q92922	
<b>Isotype:</b> IgG	<b>Full Name:</b> SWI/SNF related, matrix associated, actin dependent regulator of chromatin, subfamily c, member 1	
<b>Immunogen Catalog Number:</b> AG12109	<b>Calculated MW:</b> 1105 aa, 123 kDa	
	<b>Observed MW:</b> 155-160 kDa	

## Applications

**Tested Applications:**  
WB, IF/ICC, Cytometric bead array, Indirect ELISA, Sample test

**Species Specificity:**  
human, mouse, rat

## Background Information

SMARCC1, also named as SWI/SNF complex 155 kDa subunit or BAF155, is a 1105 amino acid protein, which belongs to the SMARCC family. SMARCC1 is expressed in brain, heart, muscle, placenta, lung, liver, muscle, kidney and pancreas. SMARCC1 is involved in transcriptional activation and repression of select genes by chromatin remodeling. SMARCC1 may stimulate the ATPase activity of the catalytic subunit of the complex. SMARCC1 belongs to the neural progenitors-specific chromatin remodeling complex (npBAF complex) and the neuron-specific chromatin remodeling complex (nBAF complex). The calculated molecular weight of TCEA1 is 123 kDa, but modified SMARCC1 is about 155-160 kDa. (PMID: 24025402)

## Storage

**Storage:**  
Store at -80°C.  
**The product is shipped with ice packs. Upon receipt, store it immediately at -80°C**

**Storage Buffer:**  
PBS only, pH7.3

For technical support and original validation data for this product please contact:

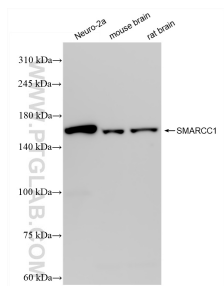
T: 4006900926

E: [Proteintech-CN@ptglab.com](mailto:Proteintech-CN@ptglab.com)

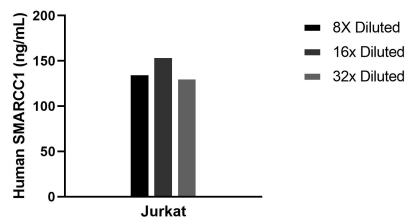
W: [ptgcn.com](http://ptgcn.com)

**This product is exclusively available under Proteintech Group brand and is not available to purchase from any other manufacturer.**

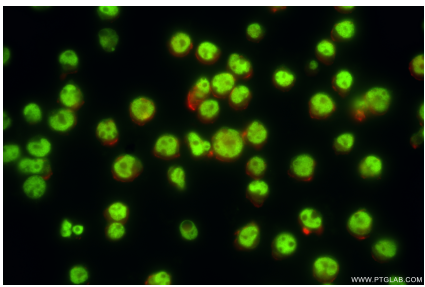
## Selected Validation Data



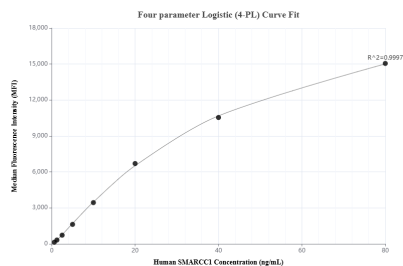
Various lysates were subjected to SDS PAGE followed by western blot with 86015-1-RR (SMARCC1 antibody) at dilution of 1:10000 incubated at room temperature for 1.5 hours. This data was developed using the same antibody clone with 86015-1-PBS in a different storage buffer formulation.



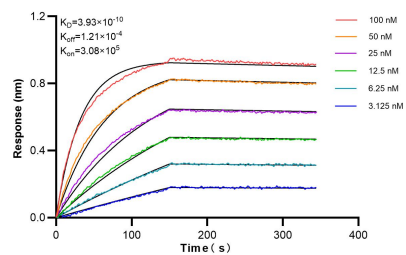
The mean SMARCC1 concentration was determined to be 130.2 ng/mL in Jurkat cell extract based on a 2.2 mg/mL extract load.



Immunofluorescent analysis of (4% PFA) fixed Jurkat cells using SMARCC1 antibody (86015-1-RR, Clone: 250455A1 ) at dilution of 1:500 and CoraLite®488-Conjugated Goat Anti-Rabbit IgG(H+L) (SA00013-2), CL594-Phalloidin (red). This data was developed using the same antibody clone with 86015-1-PBS in a different storage buffer formulation.



Cytometric bead array standard curve of MP02222-1, SMARCC1 Recombinant Matched Antibody Pair, PBS Only. Capture antibody: 86015-1-PBS. Detection antibody: 86015-2-PBS. Standard: Ag12109. Range: 0.625-80 ng/mL.



Biolayer interferometry (BLI) kinetic assays of 86015-1-RR against Human SMARCC1 were performed. The affinity constant is 0.393 nM.