

For Research Use Only

# Testin Recombinant monoclonal antibody

Catalog Number:86013-3-RR



## Basic Information

**Catalog Number:**

86013-3-RR

**Source:**

Rabbit

**Isotype:**

IgG

**Immunogen Catalog Number:**

AG0379

**GenBank Accession Number:**

BC001451

**GeneID (NCBI):**

26136

**UNIPROT ID:**

Q9UGI8

**Full Name:**

testis derived transcript (3 LIM domains)

**Calculated MW:**

48 kDa

**Observed MW:**

42-48 kDa

**Purification Method:**

Protein A purification

**CloneNo.:**

250432C8

**Recommended Dilutions:**

WB: 1:2000-1:10000

IP: 0.5-4.0 ug for 1.0-3.0 mg of total protein lysate

IF/ICC: 1:200-1:800

## Applications

**Tested Applications:**

WB, IF/ICC, IP, ELISA

**Species Specificity:**

human, mouse, rat

**Positive Controls:**

WB : HeLa cells, HEK-293 cells, K-562 cells, mouse testis tissue, rat testis tissue, human testis tissue

IP : K-562 cells,

IF/ICC : K-562 cells,

## Background Information

Testin (TES) is a cytoskeleton-associated protein that localizes along actin stress fibers at cell-cell contact areas and at focal adhesion plaques. It interacts with a variety of cytoskeletal proteins and gets involved in regulation of cell adhesion and migration. TES is a putative tumor suppressor and reduced expression of TES has been reported in various cancers. In addition, TES is a marker for Sertoli-Germ Cell junction and is useful to monitor the disruption of intercellular junctions in the testis.

## Storage

**Storage:**

Store at -20°C. Stable for one year after shipment.

**Storage Buffer:**

PBS with 0.02% sodium azide and 50% glycerol, pH7.3

Aliquoting is unnecessary for -20°C storage

For technical support and original validation data for this product please contact:

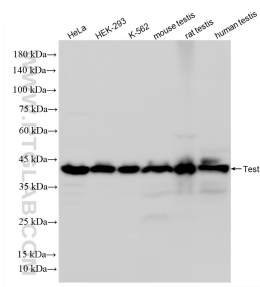
T: 4006900926

E: [Proteintech-CN@ptglab.com](mailto:Proteintech-CN@ptglab.com)

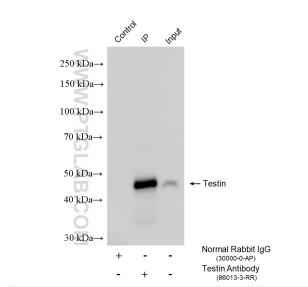
W: [ptgcn.com](http://ptgcn.com)

**This product is exclusively available under Proteintech Group brand and is not available to purchase from any other manufacturer.**

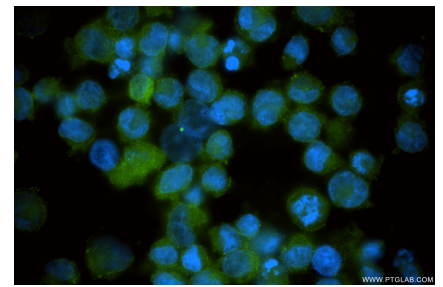
## Selected Validation Data



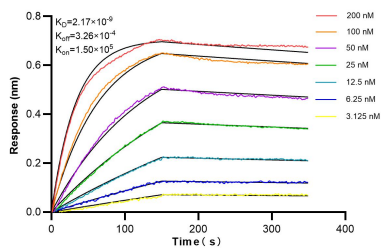
Various lysates were subjected to SDS PAGE followed by western blot with 86013-3-RR (Testin antibody) at dilution of 1:5000 incubated at room temperature for 1.5 hours.



IP result of anti-Testin (IP:86013-3-RR, 4ug; Detection:86013-3-RR 1:1000) with K-562 cells lysate 2440 ug.



Immunofluorescent analysis of (4% PFA) fixed K-562 cells using Testin antibody (86013-3-RR, Clone: 250432C8 ) at dilution of 1:400 and CoraLite@488-Conjugated Goat Anti-Rabbit IgG(H+L) (SA00013-2).



Biolayer interferometry (BLI) kinetic assays of 86013-3-RR against Human Testin were performed. The affinity constant is 2.17 nM.