

For Research Use Only

# Rat CTGF Recombinant antibody, PBS Only (Capture)

Catalog Number: 86012-4-PBS



## Basic Information

Catalog Number:

86012-4-PBS

Concentration:

1 mg/ml

Source:

Rabbit

Isotype:

IgG

Immunogen Catalog Number:

EG3239

GenBank Accession Number:

NM\_022266.2

GeneID (NCBI):

64032

UNIPROT ID:

Q9R1E9

Full Name:

connective tissue growth factor

Calculated MW:

38 kDa

Purification Method:

Protein A purification

CloneNo.:

250663B3

## Applications

Tested Applications:

Sandwich ELISA, Indirect ELISA, Sample test

Species Specificity:

rat

## Background Information

### Storage

Storage:

Store at -80°C.

The product is shipped with ice packs. Upon receipt, store it immediately at -80°C

Storage Buffer:

PBS only, pH7.3

For technical support and original validation data for this product please contact:

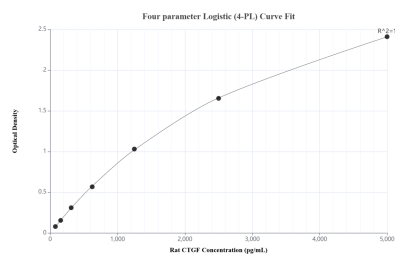
T: 4006900926

E: [Proteintech-CN@ptglab.com](mailto:Proteintech-CN@ptglab.com)

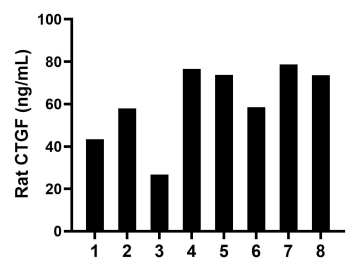
W: [ptgcn.com](http://ptgcn.com)

This product is exclusively available under Proteintech Group brand and is not available to purchase from any other manufacturer.

## Selected Validation Data



Sandwich ELISA standard curve of MP02226-2, Rat CTGF Recombinant Matched Antibody Pair - PBS only. 86012-4-PBS was coated to a plate as the capture antibody and incubated with serial dilutions of standard Eg3239. 86012-1-PBS was HRP conjugated as the detection antibody. Range: 78.1-5000 pg/mL



Serum of eight rats was measured. The CTGF concentration of detected samples was determined to be 61.2 ng/mL with a range of 26.8-78.7 ng/mL