

For Research Use Only

Rat CTGF Recombinant antibody, PBS Only (Capture)

Catalog Number: 86012-2-PBS



Basic Information

Catalog Number: 86012-2-PBS	GenBank Accession Number: NM_022266.2	Purification Method: Protein A purification
Concentration: 1 mg/ml	GeneID (NCBI): 64032	CloneNo.: 250663C12
Source: Rabbit	UNIPROT ID: Q9R1E9	
Isotype: IgG	Full Name: connective tissue growth factor	
Immunogen Catalog Number: EG3239	Calculated MW: 38 kDa	

Applications

Tested Applications:
Cytometric bead array, Indirect ELISA, Sample test

Species Specificity:
rat

Background Information

Storage

Storage:
Store at -80°C.
The product is shipped with ice packs. Upon receipt, store it immediately at -80°C

Storage Buffer:
PBS only, pH7.3

For technical support and original validation data for this product please contact:

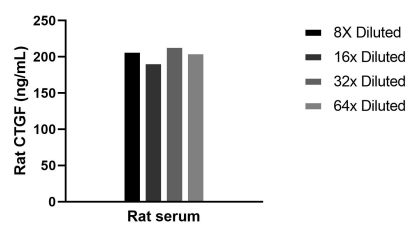
T: 4006900926

E: Proteintech-CN@ptglab.com

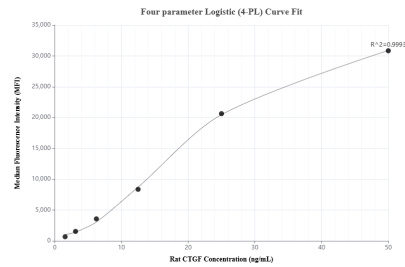
W: ptgcn.com

This product is exclusively available under Proteintech Group brand and is not available to purchase from any other manufacturer.

Selected Validation Data



The mean CTGF concentration was determined to be 205.3 ng/mL in rat serum.



Cytometric bead array standard curve of MP02226-1, RAT CTGF Recombinant Matched Antibody Pair, PBS Only. Capture antibody: 86012-2-PBS. Detection antibody: 86012-1-PBS. Standard: Eg3239. Range: 1.563-50 ng/mL.