

For Research Use Only

# Rat CTGF Recombinant antibody, PBS Only (Detector)

Catalog Number: 86012-1-PBS



## Basic Information

Catalog Number: 86012-1-PBS	GenBank Accession Number: NM_022266.2	Purification Method: Protein A purification
Concentration: 1 mg/ml	GeneID (NCBI): 64032	CloneNo.: 250663A4
Source: Rabbit	UNIPROT ID: Q9R1E9	
Isotype: IgG	Full Name: connective tissue growth factor	
Immunogen Catalog Number: EG3239	Calculated MW: 38 kDa	

## Applications

**Tested Applications:**  
Cytometric bead array, Sandwich ELISA, Indirect ELISA,  
Sample test

**Species Specificity:**  
rat

## Background Information

### Storage

**Storage:**  
Store at -80°C.  
**The product is shipped with ice packs. Upon receipt, store it immediately at -80°C**

**Storage Buffer:**  
PBS only, pH7.3

For technical support and original validation data for this product please contact:

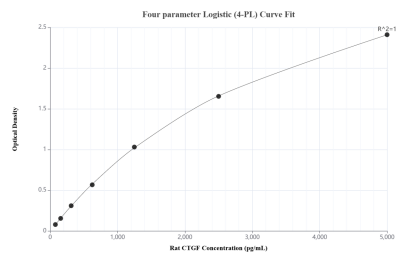
T: 4006900926

E: [Proteintech-CN@ptglab.com](mailto:Proteintech-CN@ptglab.com)

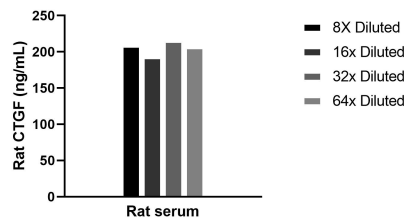
W: [ptgcn.com](http://ptgcn.com)

**This product is exclusively available under Proteintech Group brand and is not available to purchase from any other manufacturer.**

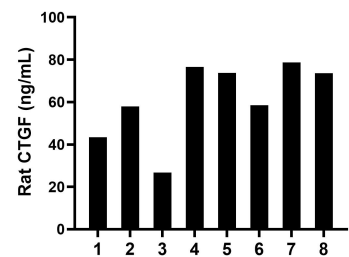
## Selected Validation Data



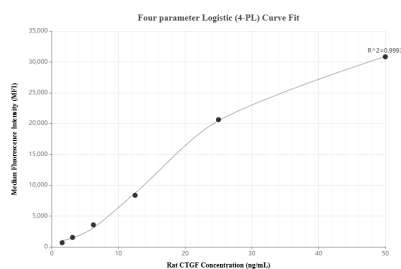
Sandwich ELISA standard curve of MP02226-2, Rat CTGF Recombinant Matched Antibody Pair - PBS only. 86012-4-PBS was coated to a plate as the capture antibody and incubated with serial dilutions of standard Eg3239. 86012-1-PBS was HRP conjugated as the detection antibody. Range: 78.1-5000 pg/mL



The mean CTGF concentration was determined to be 205.3 ng/mL in rat serum.



Serum of eight rats was measured. The CTGF concentration of detected samples was determined to be 61.2 ng/mL with a range of 26.8-78.7 ng/mL



Cytometric bead array standard curve of MP02226-1, RAT CTGF Recombinant Matched Antibody Pair, PBS Only. Capture antibody: 86012-2-PBS. Detection antibody: 86012-1-PBS. Standard: Eg3239. Range: 1.563-50 ng/mL