

For Research Use Only

# CCL27 Recombinant antibody, PBS Only (Capture)

Catalog Number: 86007-2-PBS



## Basic Information

Catalog Number: 86007-2-PBS	GenBank Accession Number: NM_006664	Purification Method: Protein A purification
Concentration: 1 mg/ml	GeneID (NCBI): 10850	CloneNo.: 242991B1
Source: Rabbit	UNIPROT ID: Q9Y4X3	
Isotype: IgG	Full Name: chemokine (C-C motif) ligand 27	
Immunogen Catalog Number: EG2461	Calculated MW: 13kd	

## Applications

**Tested Applications:**  
Sandwich ELISA, Indirect ELISA, Sample test

**Species Specificity:**  
human

## Background Information

### Storage

**Storage:**  
Store at -80°C.  
**The product is shipped with ice packs. Upon receipt, store it immediately at -80°C**

**Storage Buffer:**  
PBS only, pH7.3

For technical support and original validation data for this product please contact:

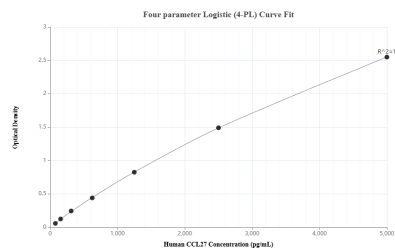
T: 4006900926

E: [Proteintech-CN@ptglab.com](mailto:Proteintech-CN@ptglab.com)

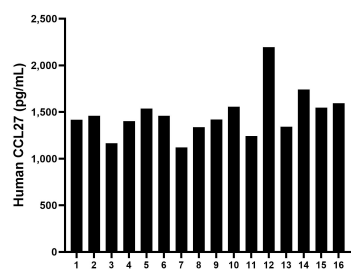
W: [ptgcn.com](http://ptgcn.com)

**This product is exclusively available under Proteintech Group brand and is not available to purchase from any other manufacturer.**

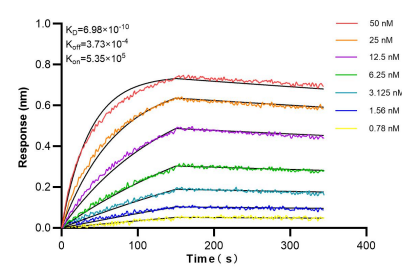
## Selected Validation Data



Sandwich ELISA standard curve of MP02216-1, Human CCL27 Recombinant Matched Antibody Pair - PBS only. 86007-2-PBS was coated to a plate as the capture antibody and incubated with serial dilutions of standard Eg2461. 86007-1-PBS was HRP conjugated as the detection antibody. Range: 78.1-5000 pg/mL.



Serum of sixteen individual healthy human donors was measured. The human CCL27 concentration of detected samples was determined to be 1,471.41 pg/mL with a range of 1,120.1 - 2,195.4 pg/mL.



Biolayer interferometry (BLI) kinetic assays of 86007-2-PBS against Human CCL27 were performed. The affinity constant is 0.698 nM.