

For Research Use Only

CCL27 Recombinant antibody, PBS Only (Detector)

Catalog Number: 86007-1-PBS



Basic Information

Catalog Number:

86007-1-PBS

Concentration:

1 mg/ml

Source:

Rabbit

Isotype:

IgG

Immunogen Catalog Number:

EG2461

GenBank Accession Number:

NM_006664

GeneID (NCBI):

10850

UNIPROT ID:

Q9Y4X3

Full Name:

chemokine (C-C motif) ligand 27

Calculated MW:

13kd

Purification Method:

Protein A purification

CloneNo.:

242991C2

Applications

Tested Applications:

Sandwich ELISA, Indirect ELISA, Sample test

Species Specificity:

human

Background Information

Storage

Storage:

Store at -80°C.

The product is shipped with ice packs. Upon receipt, store it immediately at -80°C

Storage Buffer:

PBS only, pH7.3

For technical support and original validation data for this product please contact:

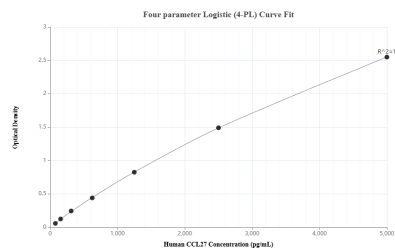
T: 4006900926

E: Proteintech-CN@ptglab.com

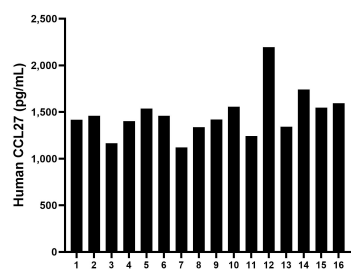
W: ptgcn.com

This product is exclusively available under Proteintech Group brand and is not available to purchase from any other manufacturer.

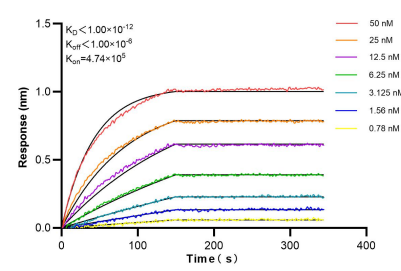
Selected Validation Data



Sandwich ELISA standard curve of MP02216-1, Human CCL27 Recombinant Matched Antibody Pair - PBS only. 86007-2-PBS was coated to a plate as the capture antibody and incubated with serial dilutions of standard Eg2461. 86007-1-PBS was HRP conjugated as the detection antibody. Range: 78.1-5000 pg/mL.



Serum of sixteen individual healthy human donors was measured. The human CCL27 concentration of detected samples was determined to be 1,471.41 pg/mL with a range of 1,120.1 - 2,195.4 pg/mL.



Biolayer interferometry (BLI) kinetic assays of 86007-1-PBS against Human CCL27 were performed. The affinity constant is below 1 pM.