

For Research Use Only

# INPP5A Recombinant antibody, PBS Only (Detector)

Catalog Number: 86001-2-PBS



## Basic Information

Catalog Number:

86001-2-PBS

Concentration:

1 mg/ml

Source:

Rabbit

Isotype:

IgG

Immunogen Catalog Number:

AG16380

GenBank Accession Number:

BC096280

GeneID (NCBI):

3632

UNIPROT ID:

Q14642

Full Name:

inositol polyphosphate-5-phosphatase, 40kDa

Calculated MW:

412 aa, 48 kDa

Purification Method:

Protein A purification

CloneNo.:

250584C2

## Applications

Tested Applications:

Sandwich ELISA, Indirect ELISA, Sample test

Species Specificity:

human

## Background Information

### Storage

Storage:

Store at -80°C.

**The product is shipped with ice packs. Upon receipt, store it immediately at -80°C**

Storage Buffer:

PBS only, pH7.3

For technical support and original validation data for this product please contact:

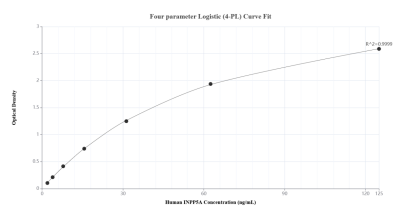
T: 4006900926

E: [Proteintech-CN@ptglab.com](mailto:Proteintech-CN@ptglab.com)

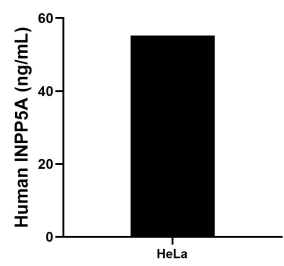
W: [ptgcn.com](http://ptgcn.com)

**This product is exclusively available under Proteintech Group brand and is not available to purchase from any other manufacturer.**

## Selected Validation Data



Sandwich ELISA standard curve of MP02318-1, Human INPP5A Recombinant Matched Antibody Pair - PBS only. 86001-3-PBS was coated to a plate as the capture antibody and incubated with serial dilutions of standard Ag16380. 86001-2-PBS was HRP conjugated as the detection antibody. Range: 1.95-125 ng/mL.



The mean INPP5A concentration was determined to be 55.23 ng/mL in HeLa cell extract based on a 1.30 mg/mL extract load.