

For Research Use Only

# INPP5A Recombinant antibody

Catalog Number: 86001-1-RR



## Basic Information

Catalog Number:

86001-1-RR

Concentration:

1000  $\mu$ g/ml

Source:

Rabbit

Isotype:

IgG

Immunogen Catalog Number:

AG16380

GenBank Accession Number:

BC096280

GeneID (NCBI):

3632

UNIPROT ID:

Q14642

Full Name:

inositol polyphosphate-5-phosphatase, 40kDa

Calculated MW:

412 aa, 48 kDa

Observed MW:

45 kDa

Purification Method:

Protein A purification

CloneNo.:

250584C3

Recommended Dilutions:

WB: 1:2000-1:10000

## Applications

Tested Applications:

WB, ELISA

Species Specificity:

human

Positive Controls:

WB : HeLa cells, fetal human brain tissue

## Background Information

INPP5A (Inositol Polyphosphate-5-Phosphatase A) is a membrane-bound type I inositol 1,4,5-trisphosphate 5-phosphatase that is involved in the mobilization of intracellular calcium ions and the regulation of cellular responses to stimuli. It terminates calcium signaling by hydrolyzing inositol 1,4,5-trisphosphate (InsP3) and inositol 1,3,4,5-tetrakisphosphate (InsP4). INPP5A plays important roles in various cellular processes, including cell proliferation, apoptosis, vesicular transport, and insulin signaling. Additionally, INPP5A is crucial for the survival of cerebellar Purkinje cells. In certain cancers, such as cutaneous squamous cell carcinoma (cSCC) and esophageal squamous cell carcinoma (ESCC), the expression levels of INPP5A are closely related to disease progression and prognosis.

## Storage

Storage:

Store at -20°C. Stable for one year after shipment.

Storage Buffer:

PBS with 0.02% sodium azide and 50% glycerol, pH7.3

Aliquoting is unnecessary for -20°C storage

For technical support and original validation data for this product please contact:

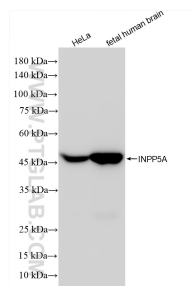
T: 4006900926

E: [Proteintech-CN@ptglab.com](mailto:Proteintech-CN@ptglab.com)

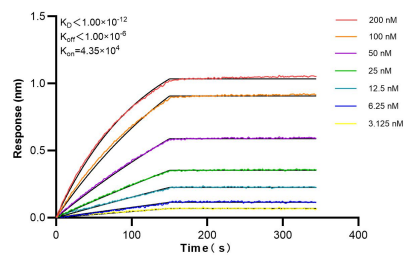
W: [ptgcn.com](http://ptgcn.com)

This product is exclusively available under Proteintech Group brand and is not available to purchase from any other manufacturer.

## Selected Validation Data



Various lysates were subjected to SDS PAGE followed by western blot with 86001-1-RR (INPP5A antibody) at dilution of 1:5000 incubated at room temperature for 1.5 hours.



Biolayer interferometry (BLI) kinetic assays of 86001-1-RR against Human INPP5A were performed. The affinity constant is below 1 pM.