

For Research Use Only

# CFP Recombinant antibody, PBS Only (Detector)

Catalog Number: 85999-4-PBS



## Basic Information

Catalog Number:

85999-4-PBS

Concentration:

1 mg/ml

Source:

Rabbit

Isotype:

IgG

Immunogen Catalog Number:

EG2219

GenBank Accession Number:

BC015756

GeneID (NCBI):

5199

UNIPROT ID:

P27918

Full Name:

complement factor properdin

Calculated MW:

469 aa, 51 kDa

Purification Method:

Protein A purification

CloneNo.:

250654D5

## Applications

Tested Applications:

Sandwich ELISA, Indirect ELISA, Sample test

Species Specificity:

human

## Background Information

### Storage

Storage:

Store at -80°C.

The product is shipped with ice packs. Upon receipt, store it immediately at -80°C

Storage Buffer:

PBS only, pH7.3

For technical support and original validation data for this product please contact:

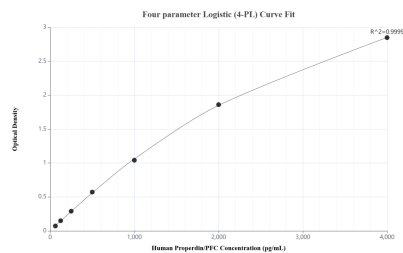
T: 4006900926

E: Proteintech-CN@ptglab.com

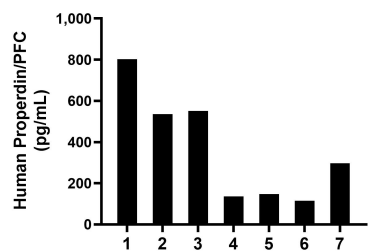
W: ptgcn.com

This product is exclusively available under Proteintech Group brand and is not available to purchase from any other manufacturer.

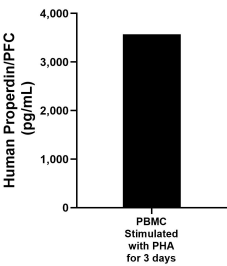
## Selected Validation Data



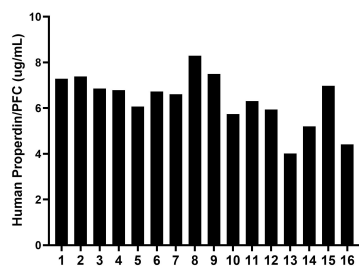
Sandwich ELISA standard curve of MP02228-2, Human Properdin/PFC Recombinant Matched Antibody Pair - PBS only. 85999-5-PBS was coated to a plate as the capture antibody and incubated with serial dilutions of standard Eg2219. 85999-4-PBS was HRP conjugated as the detection antibody. Range: 62.5-4000 pg/mL.



Urine of seven individual healthy human donors was measured. The Properdin/PFC concentration of detected samples was determined to be 369.6 pg/mL with a range of 115.7-802.5 pg/mL.



Human peripheral blood mononuclear cells (PBMC) were cultured stimulated with 10  $\mu$ g/mL PHA for 3 days. The mean Properdin/PFC concentration was determined to be 3,569.6 pg/mL in PHA stimulated PBMC supernatant.



Serum of sixteen individual healthy human donors was measured. The Properdin/PFC concentration of detected samples was determined to be 6.4 ug/mL with a range of 4.0-8.3 ug/mL.