

For Research Use Only

# ISG20L2 Recombinant antibody

Catalog Number: 85992-2-RR



## Basic Information

Catalog Number:

85992-2-RR

Concentration:

1000 µg/ml

Source:

Rabbit

Isotype:

IgG

Immunogen Catalog Number:

AG20026

GenBank Accession Number:

BC000575

GeneID (NCBI):

81875

UNIPROT ID:

Q9H9L3

Full Name:

interferon stimulated exonuclease  
gene 20kDa-like 2

Calculated MW:

353 aa, 39 kDa

Observed MW:

39 kDa

Purification Method:

Protein A purification

CloneNo.:

250419F5

Recommended Dilutions:

WB: 1:2000-1:10000

## Applications

Tested Applications:

WB, ELISA

Species Specificity:

human

Positive Controls:

WB : HeLa cells, HEK-293 cells

## Background Information

ISG20L2, also named HSD38, is a member of a vertebrate exonucleases family. ISG20L2 is composed of at least two functional domains, one at its N-terminal half allowing intracellular localization and association with the binding partners and the other at its C-terminal half bearing the 3' to 5' exoribonuclease activity. The molecular weight of ISG20L2 is 39 kDa (PMID: 18065403).

## Storage

Storage:

Store at -20°C. Stable for one year after shipment.

Storage Buffer:

PBS with 0.02% sodium azide and 50% glycerol, pH7.3

Aliquoting is unnecessary for -20°C storage

For technical support and original validation data for this product please contact:

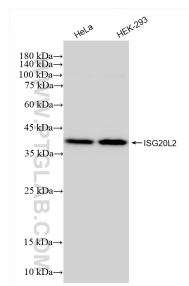
T: 4006900926

E: Proteintech-CN@ptglab.com

W: ptgcn.com

This product is exclusively available under Proteintech Group brand and is not available to purchase from any other manufacturer.

## Selected Validation Data



Various lysates were subjected to SDS PAGE followed by western blot with 85992-2-RR (ISG20L2 antibody) at dilution of 1:5000 incubated at room temperature for 1.5 hours.