

For Research Use Only

ISG20L2 Recombinant antibody, PBS Only

Catalog Number: 85992-2-PBS



Basic Information

Catalog Number:

85992-2-PBS

Concentration:

1 mg/ml

Source:

Rabbit

Isotype:

IgG

Immunogen Catalog Number:

AG20026

GenBank Accession Number:

BC000575

GeneID (NCBI):

81875

UNIPROT ID:

Q9H9L3

Full Name:

interferon stimulated exonuclease
gene 20kDa-like 2

Calculated MW:

353 aa, 39 kDa

Observed MW:

39 kDa

Purification Method:

Protein A purification

CloneNo.:

250419F5

Applications

Tested Applications:

WB, Indirect ELISA

Species Specificity:

human

Background Information

ISG20L2, also named HSD38, is a member of a vertebrate exonucleases family. ISG20L2 is composed of at least two functional domains, one at its N-terminal half allowing intracellular localization and association with the binding partners and the other at its C-terminal half bearing the 3' to 5' exoribonuclease activity. The molecular weight of ISG20L2 is 39 kDa (PMID: 18065403).

Storage

Storage:

Store at -80°C.

The product is shipped with ice packs. Upon receipt, store it immediately at -80°C

Storage Buffer:

PBS only, pH7.3

For technical support and original validation data for this product please contact:

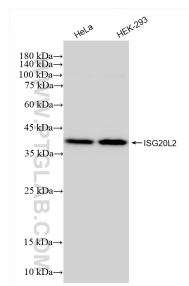
T: 4006900926

E: Proteintech-CN@ptglab.com

W: ptgcn.com

This product is exclusively available under Proteintech Group brand and is not available to purchase from any other manufacturer.

Selected Validation Data



Various lysates were subjected to SDS PAGE followed by western blot with 85992-2-RR (ISG20L2 antibody) at dilution of 1:5000 incubated at room temperature for 1.5 hours. This data was developed using the same antibody clone with 85992-2-PBS in a different storage buffer formulation.