

YWHAH Recombinant monoclonal antibody

Catalog Number: 85987-2-RR

Basic Information

Catalog Number:

85987-2-RR

Concentration:

1000 µg/ml

Source:

Rabbit

Isotype:

IgG

Immunogen Catalog Number:

AG7435

GenBank Accession Number:

BC003047

GeneID (NCBI):

7533

UNIPROT ID:

Q04917

Full Name:

tyrosine 3-monooxygenase/tryptophan 5-monooxygenase activation protein, eta polypeptide

Calculated MW:

28 kDa

Observed MW:

28 kDa

Purification Method:

Protein A purification

CloneNo.:

250473G10

Recommended Dilutions:

WB: 1:5000-1:50000

IF/ICC: 1:250-1:1000

Applications

Tested Applications:

WB, IF/ICC, ELISA

Species Specificity:

human, mouse, rat

Positive Controls:

WB : HeLa cells, Raji cells, A431 cells, NIH/3T3 cells, fetal human brain tissue, mouse brain tissue, rat brain tissue

IF/ICC : HeLa cells,

Background Information

YWHAH (also known as 14-3-3 eta) is a member of 14-3-3 proteins which were the first phosphoserine/phosphothreonine-binding proteins to be discovered. 14-3-3 family members interact with a wide spectrum of proteins and possess diverse functions. Mammals express seven distinct 14-3-3 isoforms (gamma, epsilon, beta, zeta, sigma, theta, tau) that form multiple homo- and hetero- dimers. 14-3-3 proteins display the highest expression levels in the brain, and have been implicated in several neurodegenerative diseases, including Alzheimer's disease and amyotrophic lateral sclerosis. This antibody was raised against the full-length YWHAH.

Storage

Storage:

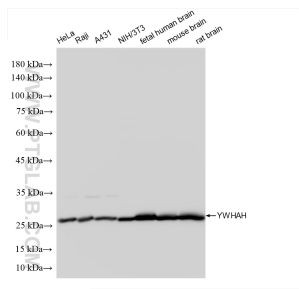
Store at -20°C. Stable for one year after shipment.

Storage Buffer:

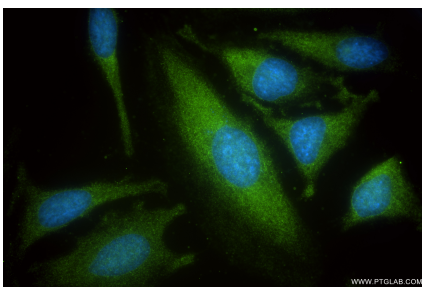
PBS with 0.02% sodium azide and 50% glycerol, pH7.3

Aliquoting is unnecessary for -20°C storage

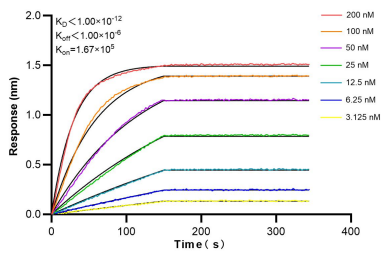
Selected Validation Data



Various lysates were subjected to SDS PAGE followed by western blot with 85987-2-RR (YWHAH antibody) at dilution of 1:10000 incubated at room temperature for 1.5 hours.



Immunofluorescent analysis of (-20°C Ethanol) fixed HeLa cells using YWHAH antibody (85987-2-RR, Clone: 250473G10) at dilution of 1:500 and CoraLite® 488-Conjugated Goat Anti-Rabbit IgG(H+L) (SA00013-2).



Biolayer interferometry (BLI) kinetic assays of 85987-2-RR against Human YWHAH were performed. The affinity constant is below 1 pM.